

全国免费服务热线
National Free Service Hotline

400-8813-578



德尔法电梯有限公司
Delfar Elevator Co.,Ltd.

地址：浙江省湖州市环渚路915号
Add: No.915, Huanzhu Road, Huzhou, Zhejiang, China
电话(Tel): +86-572-2090666(Chinese Speaking)
+86-572-2235922(English Speaking)
传真(Fax): +86-572-2090505(Chinese)
+86-572-2235912(English)
邮编(P.C): 313000
E-mail: delfar@delfar.cn
Http://www.delfar.cn

本印刷品仅供参考。本印刷品所载信息就产品及其特殊用途之适用性、适用性、品质或任何采购协议条款不构成任何明示或暗示的担保或承诺。
The printed products are for reference only. The company has the right to change the designs and specifications of the products at any time. The information contained in the printed products does not constitute any express or implied guarantees or commitments for the products and its applicability, merchantability, and quality of special purposes, or any terms of Procurement Agreement.

2016年4月版
Ver.201604



DELFA
德尔法电梯

FREIGHT ELEVATOR

载货电梯 Delfar lifts you UP
世界向前，科技向上

德尔法电梯有限公司
Delfar Elevator Co.,Ltd.

Delfar Elevator-----Safe, Hi-tech, Efficient

德尔法电梯——安全 科技 高效

高楼林立的城市，见证着日新月异的时代，
诉说着现代人智慧、创新的故事.....

A city of skyscrapers , witnesses the fast-changing era
Tells the story of modern wisdom and innovation

德尔法载货电梯 楼宇物流运输的“搬运工”

它以强劲的承载力担当楼宇货运，以安全的保障系统完成每一次重托，以高效的服务能力
胜任上下的运输使命。

无论是1000kg还是5000kg的货物，它都以出色的表现让您为之叹服
如此稳当，如此简单，你要做的只是轻触按钮。

Delfar freight elevator
“Carrier” of the building logistics and transport

It carries goods through buildings with its strong bearing capacity,
completing every heavy lifting with its safe protecting system, and
succeeding in up and down transporting with its efficient service
capability.

Whether of 1000kg or 5000kg goods, its excellent performance will
amaze you.

So safe, so simple, what you have to do is only to touch the button.



Company introduction

公司介绍

德尔法电梯有限公司是集电梯设计、制造、销售、安装与维保于一体的专业型电梯企业。公司地理位置极其优越，交通便捷，辐射广阔，以江南为中心，致力成为服务全球的最佳交通解决方案提供商。

公司严格按照ISO9001质量体系标准和欧洲标准组织生产，配备了世界一流的全套数控加工设备、机器焊接等自动化装备和精密的检测仪器，并依托全球领先的电梯控制技术，确保了产品品质的精湛卓绝，打造了无与伦比的电扶梯精品，奠定了企业雄厚的制造实力。

公司为满足客户多样化的需求，开发了乘客电梯、观光电梯、病床电梯、家用电梯、载货电梯、汽车电梯、小机房电梯、无机房电梯、自动扶梯和自动人行道等系列产品，并凭借其完善的全球化市场服务网络，为世界建筑楼宇提供了安全、科技、高效的解决之道，赢得了众多客户的信赖，建立了品牌极高的知名度和美誉度。

Delfar Elevator Co., Ltd. is a specialized elevator enterprise that designs, manufactures, sells, installs, maintains the elevators. The company enjoys a predominant geographical location, convenient transportation, broad market. Centered on Jiangnan, Delfar is committed to become the best transportation service solution provider of the globe.

The company strictly accords with the ISO9001 Quality System and European standard to organize the manufacture. Equipped with a full set of world-class numerical control machining equipment, automation equipment including welding machine and precise detecting instrument, relied on advanced world's leading elevator control technology, the company ensures excellent quality and creates incomparable elevators and escalators, which lays the foundation of solid manufacturing strength.

In order to satisfy customer's diversified requirements, we produce Passenger elevator, Observation elevator, Bed elevator, Home elevator, Freight elevator, Car elevator, SMR elevator, MRL elevator, Escalator and Moving walk etc. With perfect global marketing services network, Delfar provides a safe, technological, high efficient solution to the buildings of the world and wins the trust of numerous customers, establishing high popularity and reputation of the brand.

公司以客户为本，关注从设计、制造、安装到维保服务的整个电梯生命周期，为此，从人才出发，建立了专业型的人才体系和严谨科学的管理体系，采用了集CAD、CAM、ERP为一体的综合网络管理系统和“5S1A”的现场管理模式，为全球客户提供持续创新的产品解决方案和服务。

未来，德尔法电梯将继续秉承“互惠共赢”的价值观和“诚信经营、不断进取、奉献社会”的经营理念，竭诚为客户提供尽善尽美的运载产品和服务，成为客户的信赖伙伴。

Customer oriented, the company pays attention to the whole life cycle of lift from design, manufacture, installation to maintenance service. For this reason and based on talent, the company establishes a professional talent system and rigorous and scientific management system. With comprehensive network management system which integrates CAD, CAM, ERP into one and "5S1A" site management mode, the company provides continuous innovative product solutions and services to the global customers.

In the future, Delfar elevator will continue to adhere its value "mutually-beneficial and win-win cooperation" and business ideas "honest Management, Continuous progress and dedicate to society", Wholeheartedly provide customers with perfect transport products and services, becoming a reliable partner with our customer.



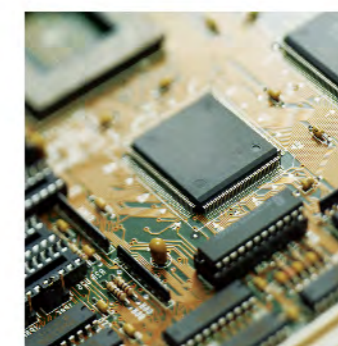
Master ten technologies, create extraordinary freight 掌握十项技术，打造非凡货运

- ①一体化的驱动控制系统：结构紧凑，接线少，操作简便，经济实用。
- ②嵌入式微处理器：与电机驱动控制一体化工作，运行高效。
- ③CAN、RENBUS总线通讯：通讯方便，接线简单，数据传输能力强，可靠性高。
- ④直接停靠技术：运送货物效率更高。
- ⑤矢量控制技术：电机调速性能优异，实现最佳舒适感。
- ⑥预转矩启动技术：使得电梯的启动更加平稳。
- ⑦增量性编码器：同步马达控制，确保电梯平稳启动。
- ⑧PWM补偿技术：有效降低电梯噪音和电机损耗。
- ⑨动态PWM载波调制技术：有效降低电梯噪音。
- ⑩第6代新型模块技术：耐高温，损耗低，延长系统使用寿命。

- ①Integrated drive control system: compacted in design, less wiring, easy to operate, economical and practical.
- ②Embedded microprocessor: work integrated with motor drive control efficiently.
- ③CAN, RENBUS bus communication: convenient to communicate, easy to wire, strong data transfer ability, high reliability.
- ④Direct stopping technology: higher efficiency to transfer goods.
- ⑤Vector control technology: motor speed adjustor with high quality, to realize the best sense of comfort.
- ⑥Pre-torque starting technique: make the starting of elevator smoother.
- ⑦Incremental linear encoders: synchronous motor control to ensure the stable starting of elevator.
- ⑧PWM compensation technique: effectively reduce the elevator noise and the motor loss.
- ⑨Dynamic PWM carrier modulation technique: effectively reduce the elevator noise.
- ⑩The 6th new generation module technology: high temperature withstanding, low loss and extending system using durability.

德尔法系列货梯率先引用业内十项领先的控制技术和驱动技术，打造可靠的运载系统，确保在繁重的运输环境下，电梯也能高效、稳定地为楼宇提供强有力的货运服务。

Delfar series freight elevator takes the lead in introducing the ten leading control and drive technology in the industry and builds a reliable delivery systems, which ensures that the elevator can provide satisfactory service efficiently and stably under heavy transportation.





Eight elites to support, easy enough to carry 八大精锐支撑，运载轻松有余



- ①采用大容量主机设计，动力强劲。
- ②增设两倍大的变频器裕量，充分发挥货梯卓越的运载性能。
- ③采用国际标准制造的安全钳、限速器，安全级别更高。
- ④制动器力矩增大额定转矩，实现大吨位运载更安全智能。
- ⑤专用蠕动平层技术，精确平层，搬运货物如履平地。
- ⑥采用先进的门机系统，达到最大开门宽度。
- ⑦采用光幕门保护装置，灵敏反应，人货皆享保护。
- ⑧专门为货梯设计开门等待功能，为长时间进出搬运货物提供方便。

- ①Apply large -capacity traction machine design, which has strong power.
- ②Enlarge twice of the capacity of variable frequency drive, to give full play to the superior carrying capability of the freight elevator.
- ③Apply the international standard manufactured safety gear and speed governor, which have higher safety level.
- ④To enlarge the brake rating torque, so as to achieve more secure and smart large tonnage carryings.
- ⑤Apply peristaltic leveling technology specifically, which can level precisely to make sure the goods are carried as easily as on smooth ground.
- ⑥Apply advanced door operator system, and can reach the maximum width of the door opening.
- ⑦Apply light-curtain door protection, which is intensive and can make sure of the safety of passengers and goods.
- ⑧To design the door open waiting function of freight elevator specifically to facilitate the long time goods carrying.



Freight elevator 载货电梯

德尔法系列载货电梯采用全电脑电梯专用控制系统、经典可靠的驱动方式、性能卓越的门传动结构、高强度的轿厢设计，使之在各种工况下均举重若轻、胜任有余。

其产品规格齐全，性能优越，可靠耐用，性价比高，可满足各类载货用途，并适应不同建筑结构，广泛用于工厂、生产线、仓库、商场、购物中心、展览馆等货物流场所。

Delfar series freight elevator applies full computer control system for the use of elevator, classical and reliable drive mode, excellent functioned door drive structure and high strengthened car design, which allow it working easily and freely.

This series has various specifications, excellent function, highly cost effective, reliability and durability, which can meet all kinds of goods purposes and adapt to different building structures. And it is widely used in the factory, production line, warehouse, malls, shopping center, galleries and other freight logistics sites.

工艺精密，运载可靠 Precise technology, reliable carrying



轿底采用电泳浸漆三层，胜任货梯的特殊使用环境

Car bottom applies electrophoresis infiltration three layers and it can be used in special situations.

采用防固技术，增强抗锈蚀能力

Apply fixing technology and enhance anti-corrosion ability.

采用科学的力学设计，加厚钢板增加承重力

Apply scientific mechanical design and thicken steel plate to increase the loading capacity.

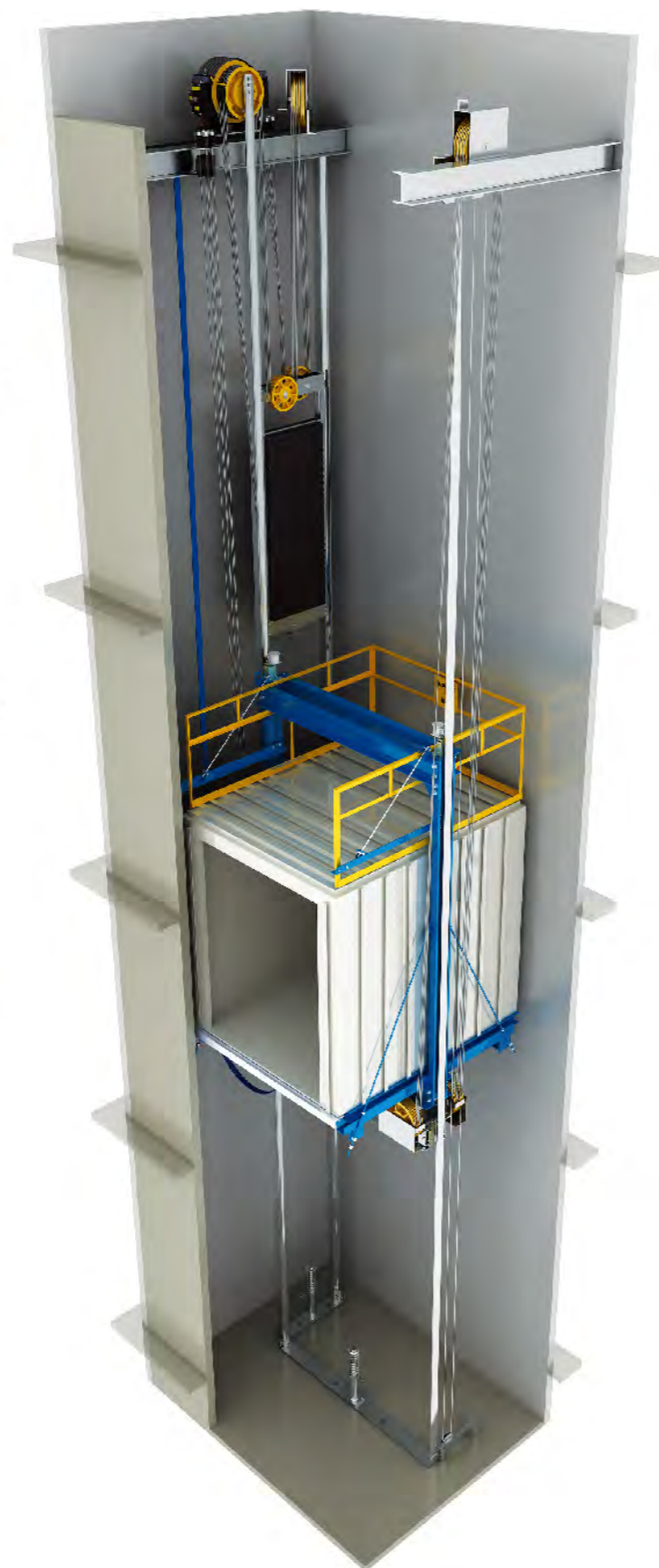
运用源自欧洲的精密机械工艺，保障货梯的最佳运输能力

Apply the precise machinery technology from Europe to ensure the best carrying capability of freight elevator.

MRL Freight Elevator 无机房载货电梯

德尔法系列无机房载货电梯采用无机房技术，运用了世界先进的永磁同步技术和控制技术，轻松融入建筑，成为了图书馆、物流中心等建筑商所青睐的货运工具。

Delfar series machine room-less freight elevator applies MRL and the world advanced permanent magnetic and control technologies. It can integrate the buildings easily so is now very popular among library and logistics center builders.

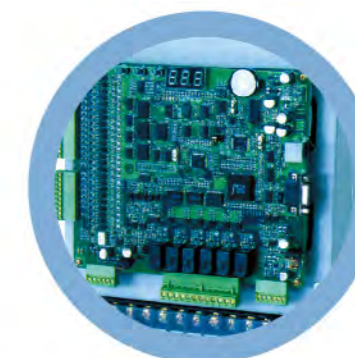


Intelligent Design, create new freight experience 智慧设计，创造全新的货运体验



低振低噪，绿色运载——与传统主机相比，采用永磁同步曳引机，降低了振幅频率，低振低噪运行，因无需润滑装置，彻底解决了漏油造成的环境污染问题。

Low vibration and low noise, green high energy-saving — Compare with the traditional traction machine, it applies permanent magnetic traction machine. So it reduces the amplitude frequency and operates at low vibration and low noise. And as there is no need to install lubrication device it effectively avoids potential danger of environment pollution caused by oil leaking.



平稳货运，畅通无阻——采用全闭环VVVF变频驱动，保障了电梯启动、运行、停止平稳舒适，避免了货物搭载的颠簸摇晃问题。

Smooth carrying, free traveling— Apply whole closed loop VVVF technology which ensure the smooth and comfortable of elevator when starting, operating and stopping so that to avoid the pitch and roll while carrying goods.



安全可靠，有效载动——专业制动器直接作用于电机曳引轮，可实现任何情况下的可靠制停，安全有保障。

Safe and reliable, efficient working—Professional brake acts on the motor sheave directly, so it can realize stable stopping in any situations, which is safe and reliable.



节省空间，灵动自由——采用紧凑型的无齿轮曳引机和苗条型控制柜，便于安装在井道内，节省建筑空间，为建筑设计创造无限自由。

Space saving, free and flexible—Apply permanent magnetic gearless traction machine with light weight and small size, and slender control cabinet, which makes the installation in the shaft more easily and saves construction space. It brings about a freer and more flexible construction space.

Car Elevator 汽车电梯

德尔法系列汽车电梯采用全电脑智能型控制系统，充分保证了汽车电梯安全与可靠的运行品质，是停车库（场）快速移动汽车的理想垂直运输工具。

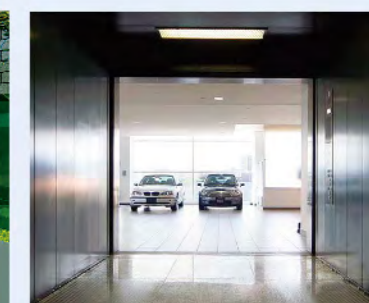
Delfar series car elevator applies full computer intelligent control system, and fully guarantees the safety and reliability of the running quality. It's the ideal lifting transportation for car swift moving in the parking lot.

六大领先设计，让驾驭自由随行

Six leading designs, make driving around you everywhere.

- 1、为更好呵护您的爱车，采用3D光幕，全方位保护汽车出入安全。
- 2、为方便您的操作，采用人性化的操纵盘设计，司机在车内便可以操作电梯。
- 3、轿底采用安全导向设置，保证电梯与爱车安全。
- 4、专用电路控制及显示系统，便于您时时了解用梯信息。
- 5、选配前后贯通门设计，便于爱车快速进出。
- 6、先进的车辆出入调度信号管理系统，完美服务于您。

1. For caring your car more, we apply 3D light curtain so as to protect the car access safety fully.
2. For your convenient operation, we apply user-friendly operation panel design so the drivers can operate the elevator in the car.
3. We apply safe guiding device in the car bottom to ensure the safety of the elevator and your car.
4. We apply specialized circuit control and display system for your knowing the elevator using information at anytime.
5. You can choose the optional front and rear opening design for your car accessing convenience.
6. The advanced car accessing scheduling signal management system will give you perfect service.





Dumbwaiter Elevator 杂物电梯

德尔法系列杂物电梯是一种快捷、方便、经济的垂直运输方式，它节省了时间、人力资源，能为宾馆、饭店、住宅、银行、写字楼、医院、商厦、工厂、图书馆、实验室、邮电部门等快速供应饮食、餐具、日用品、钱币、文件、药品、货物、图书、仪器、函件等物品，是您工作不可或缺的好帮手。

Delfar series dumbwaiter elevator is a fast, convenient and economical lifting transportation. It saves time and human resources, and can serve foods, drinks, table wares, daily necessities, money currencies, documents, medicines, goods, books, instruments, letters etc. for hotels, restaurants, apartments, banks, office buildings, hospitals, shopping malls, factories, libraries, laboratories, departments of Posts and Telecommunications etc. Thus, it's an indispensable good helper in your work.

细致用心，灵巧助力 Meticulous and caring, smart and helpful

采用先进的工业电脑板控制和新颖的工艺设计，平稳地输送您的细小物品；采用发纹不锈钢板制作轿厢和厅门，豪华美观，安装方便，空间利用率高；拥有货物直接进出的窗台式和方便载货小车进出的落地式，满足个性化需求。

We apply advanced technical computer panel control and novel crafts design, which can transport your small goods stably; also we apply hairline stainless steel for cars and landing door which is luxurious and graceful. And it's easy to install and the spatial use factor is high; we have window-type for goods in and out directly, also we have floor-type for freight car accessing, to meet the individual needs.



窗口型（上下直分）
Window-type (up and down straight opening)



落地型（上下直分）
Floor-type (up and down straight opening)

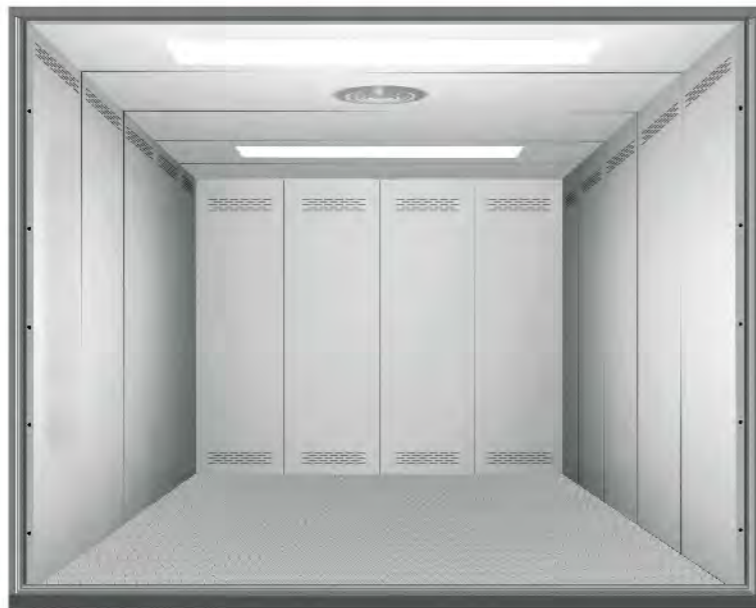
Car decoration 货梯轿厢装潢



标配 Standard

轿顶：优质喷涂钢板（颜色可选）
轿壁：优质喷涂钢板（颜色可选）
轿门：优质喷涂钢板（颜色可选）
地板：花纹钢板

Ceiling: Painted steel plate (optional color)
Car wall: Painted steel plate (optional color)
Car door: Painted steel plate (optional color)
Floor: Curved lined steel



选配 Optional

轿顶：发纹不锈钢
轿壁：发纹不锈钢
轿门：发纹不锈钢
地板：花纹钢板

Ceiling: Stainless steel hairline
Car wall: Stainless steel hairline
Car door: Stainless steel hairline
Floor: Curved lined steel

Car decoration 轿厢装潢



旁开两扇门 2P side opening



中分四扇门 4P center opening

货梯信号系统 Freight elevator signaling system



D36173



D35177

汽车电梯信号系统 Car elevator signaling system



D36178

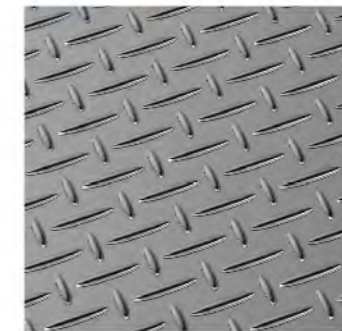


D35179



D35080

地板 Floor



标准配置：花纹钢板
Standard configuration: Curved lined steel

防撞板（选配） Crash barrier(optional)



材质：木质
Material: Wooden

喷涂钢板色块 Painted steel color



DS001
驼色
Camel gray

DS002
淡黄灰
Yellowish gray

DS003
淡苹果绿
Apple green

DS005
天（铁）蓝
Sky blue

DS006
深豆绿
Deep nutmeg green

Function table

功能表

注：功能列表以德尔夫电梯技术为准，详情请洽德尔夫电梯当地销售代表。
Remark: Please refer to Delfar Elevator technical documents and contact our Delfar Elevator sales person for details.

Standard Function 标准功能

● Function name 功能名称	● Function elucidation 功能说明
全集选控制 Full collection operation	全集选控制操作。 All registered car hall calls will be answered in the sequence by which the elevator cars approach the landings.
本层重开门 Reopen with hall call	关门途中，可以按本层站召唤按钮使门重新开启。 In the door shutting process, press reopen with hall call button can restart the door.
停梯开门 Car stops and door open	电梯减速平层，直到完全停稳后才开门。 The lift decelerates and levels, the door only opens after the lift comes to a complete stop.
自动返基站功能 Automatic returning to main floor	在交通量低时，无召唤信号的电梯将自动返回基站，关门等待。 When the traffic flow is low, elevator without receiving commanding signals will automatically return to the base floor and standby with the door closed.
直驶 Directly running	在由司机控制情况下，按直驶按钮后，只根据轿厢指令行驶，不应答厅外召唤。 Under the operator's control, after the direct running button is pressed, the lift only runs directly according to the directives from inside the car and does not respond to any calls from outside.
电梯门重复开关 Repeated door closing	有时因阻碍或干扰，电梯门未能关闭，电梯门会重复打开或关闭，直到杂物被清除。 If the lift can not close the door due to certain obstacle or interference, the lift will reopen or re-shut the door until sundries are eliminated.
上电再平层 Re-leveling upon power recovery	由于电源故障引起轿厢停在两层之间，当电源恢复后轿厢将就近自动运行到平层位置。 A power failure might cause the elevator to stop between two floors. However, upon recovery of the power, the car automatically moves to the nearest leveling floor.
超载停梯 Overload holding stop	轿厢超载时，鸣响蜂鸣器并停止于该层站。 When the car is overload, the buzzer rings and stops the lift in the same floor.
防止失速内部计数器保护 Anti-stall timer protection	由于曳引钢丝绳打滑而无法正常运行时，电梯停止运行。 The lift stops operation due to slippery traction wire rope.
启动保护控制 Start protection control	电梯启动后在指定的时间内，没有离开门区，电梯停止运行。 If the lift does not leave door zone within the designated time after it gets started, it will stop the operation.
检修操作 Inspection operation	当进入检修状态时，轿厢以慢速点动运行。 When the lift enters into inspection operation, the car travels at inching running.
上下越层及上下极限保护装置 Up/down over-run and final limit protection	该装置可有效地防止当电梯万一发生失控时的冲顶或撞底现象，使电梯更安全可靠。 The device can effectively prevent from the lift's surging to the top or knocking the bottom when it is out of the control. It results in the more safe and reliable lift travel.
下行超速保护装置 Down over-speed protection device	当电梯下降运行的速度超过额定速度的1.2倍时，该装置自动切断控制电源，使电机停止运转以阻止电梯超速下行。 When the lift downs 1.2 times higher than the rated speed, this device will automatically cut off control mains, stop the motor running so as to stop lift down at over-speed.
上行超速保护装置 Upward over-speed protection device	当电梯上行的速度超过额定速度的1.2倍时，该装置自动将电梯制停。 When the lift ups 1.2 times higher than rated speed, the device will automatically brake the lift.
光幕保护 Light curtain	门关闭期间，用覆盖整个门高度的红外光探测乘客和物体的门保护装置。 In the door shut period, infrared light that covers the whole door height is used to probe the door protection device of both the passengers and objects.

应急照明 Emergency car lighting	停电时，自动打开轿内应急照明。 Emergency car lighting automatically activated once power failure.
五方通话装置 Five way intercom	通过对讲机，可让轿内、轿顶、电梯机房、井道底坑、救援值班室之间通话。 Communication amid car, car top, lift machine room, well pit and rescue duty room through walkie-talkie.
警铃 Bell	紧急时，连续按下轿内操纵箱上的警铃按钮，安装于轿厢顶上的电铃会鸣响。 In emergency conditions, if bell button above car operation panel is continuously pressed, electric bell rings on top of the car.
轿内及层站微动指令按钮 Micro-touch button for car call and hall call	轿内操纵箱指令按钮及层站召唤按钮采用新型微动型按钮。 Novel micro-touch button is used for operation panel command button in the car and landing calling button.
轿内层楼、方向指示 Floor and direction indicator inside car	轿内显示电梯所在层楼及当前运行方向。 The car shows the lift floor location and current travel direction.
层站层楼、方向指示 Floor and direction indicator in hall	层站显示电梯所在层楼及当前运行方向。 The landing shows the lift floor location and current travel direction.
轿厢风扇、照明自动开关 Car ventilation, light automatic shut off	在规定的时间内没有召唤或指令信号，轿厢内的风扇和照明会自动关闭，以节能。 If there is no calling or command signal within the stipulated time, the car fan and lighting will be automatically closed in order to save the energy.
基站锁梯 Main floor key switch	通过钥匙开关，电梯可以被召唤到基站（服务完成后），并自动退出服务。 The lift can be called to main landing (after finishing the service) through the key switch and automatically exits the service.
消防返回 Fire emergency return	启动基站或监控屏上的钥匙开关，所有召唤均被取消，电梯立即驶往基站层停靠，并自动开门。 If you start key switch in main landing or monitor screen, all the callings will be cancelled. The lift directly and immediately drives to the main floor and automatically opens the door.

Optional Function 选配功能

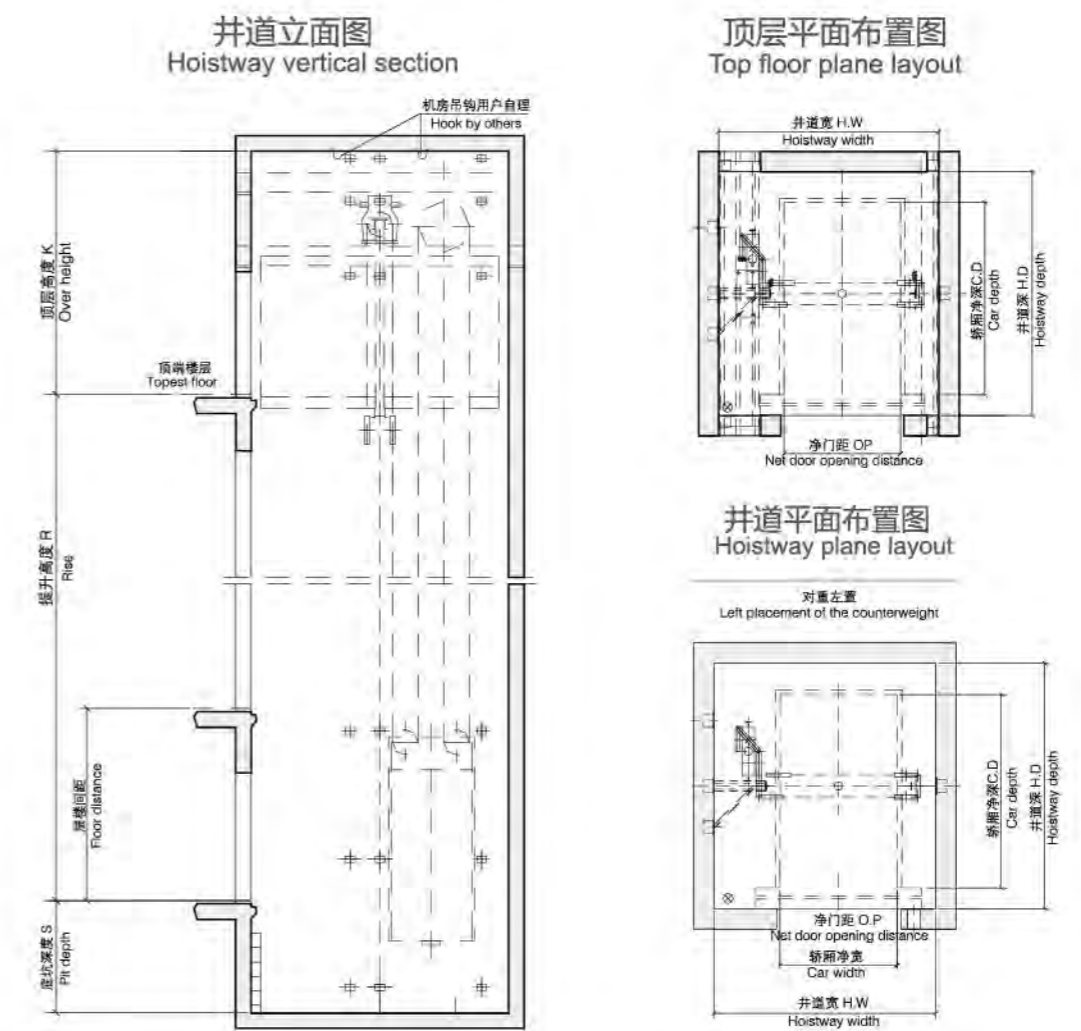
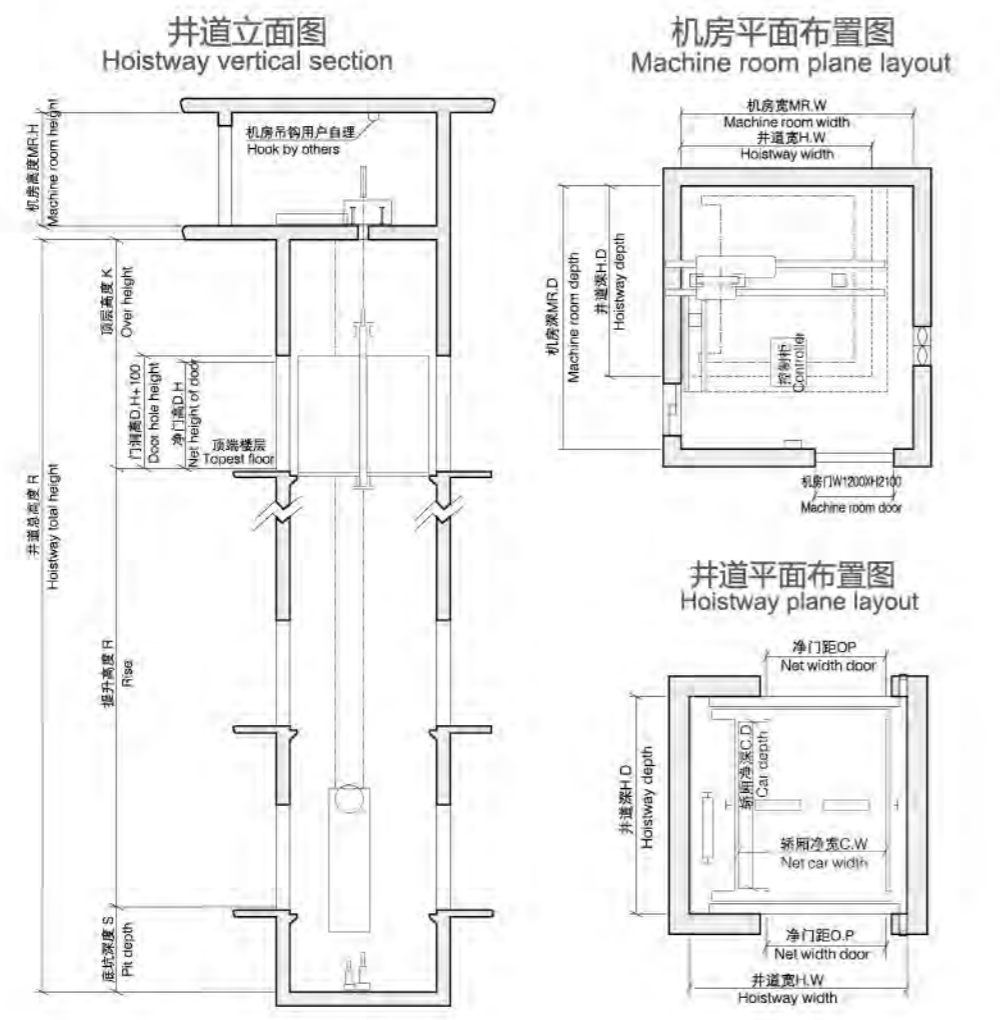
● Function name 功能名称	● Function elucidation 功能说明
层站运行控制 Operation control at stations	通过转动安装在特定楼层上的钥匙开关（可选择），可对某些层站停止服务。 Through turning the key switch installed on a specific floor (optional), the elevator can be arranged to stop service for a certain floors.
开门时间延长 Door open time extending	按轿厢内的专用按钮，可使门在一段延续时间内保持开门状态，从而便于装卸材料。 By pressing a specific button located in the car, the door can be kept open for a certain period of time, which facilitated the loading and unloading of goods.
轿厢副操纵箱 Car assistant operation box	用于大载重量电梯或候梯人群稠密大楼中的电梯，以便让轿厢内更多的乘客方便使用。 It is used in the large loading weight lifts or the lifts with crowded passengers so that more and more passengers can use the car.

Freight elevator construction parameters

载货电梯土建参数

MRL Freight elevator construction parameters

无机房载货电梯土建参数



参数表 Specifications

载重量 Loading capacity (kg)	1000		1600		2000		3000		5000			
额定速度 Rated speed(m/s)	0.5	1.0	0.5		0.5		0.5		0.25		0.5	
开门尺寸 (mm) Door opening size	旁开双折 2 Panel side opening 1400 x 2100		旁开双折 2 Panel side opening 1500 x 2100		中分双折 4 Panel center opening 1700 x 2100		中分双折 4 Panel center opening 2000 x 2100		中分双折 4 Panel center opening 2500 x 2500		中分双折 4 Panel center opening 2500 x 2500	
出入口 Exit and entrance	不贯通 not through	贯通 through	不贯通 not through	贯通 through	不贯通 not through	贯通 through	不贯通 not through	贯通 through	不贯通 not through	贯通 through	不贯通 not through	贯通 through
轿厢尺寸(mm) Car size	宽 Width	1400	1500		1700		2000		2500			
	深 Depth	1700	2300		2400		2800		3500			
	高 Height	2200	2200		2200		2200		2600			
井道尺寸(mm) Hoistway size	宽 Width	2500	2650		3000		3400		4100			
	深 Depth	2200	2180	2800	2800	2900	2900	3300	3300	4000	4000	4000
机房尺寸(mm) Machine room size	宽 Width	3000	3500		3700		4000		4100			
	深 Depth	3200	3500		3500		4000		4000	4000	4000	4000
	高 Height	2500	2500		2500		2500		2800			
顶层高度 Top floor height(mm)	3900	4000	4000		4000		4000		4500			
底坑深度 Pit depth(mm)	1400	1500	1400		1400		1400		1500			
最大提升高度 Max travelling height(m)	20	40	20		20		20		10		20	

注：以上尺寸仅供设计参考，具体尺寸以合同签约时提供的土建图为准。
Note: Only for reference, final manufacture please follow drawing.

参数表 Specifications

载重量 Loading capacity (kg)	1000		1600		2000		3000	
额定速度 Rated speed(m/s)	0.5		0.5		0.5		0.5	
开门尺寸 (mm) Door opening size	旁开双折 2 Panel side opening 1400 x 2100		中分双折 4 Panel center opening 1500 x 2100		中分双折 4 Panel center opening 1500 x 2100		中分双折 4 Panel center opening 2000 x 2100	
出入口 Exit and entrance	不贯通 not through		不贯通 not through		贯通 through	不贯通 not through	贯通 through	不贯通 not through
曳引比 Traction ratio	2:1		4:1		4:1		4:1	
轿厢尺寸(mm) Car size	宽 Width	1600	1500		1500		2000	
	深 Depth	1400	2300		2700		2800	
	高 Height	2200	2200		2200		2200	
井道尺寸(mm) Hoistway size	宽 Width	2500	2800		2800	2800	3500	3500
	深 Depth	1900	2800		3200	3200	3300	3300
顶层高度 Top floor height(mm)	4200	4500		4500		4500		
底坑深度 Pit depth(mm)	1700	1700		1700		1700		
最大提升高度 Max travelling height(m)	25	40	20		20		20	

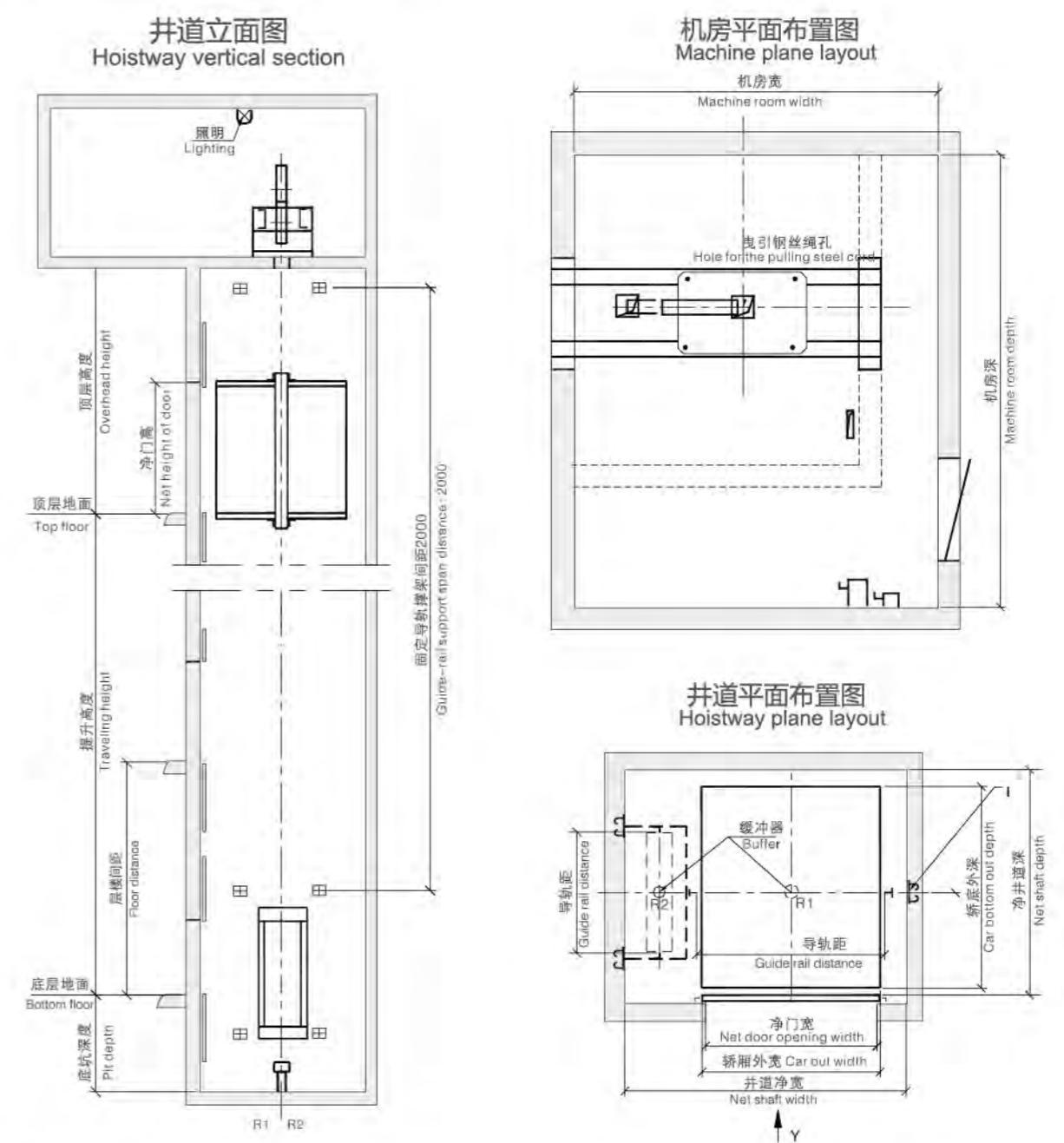
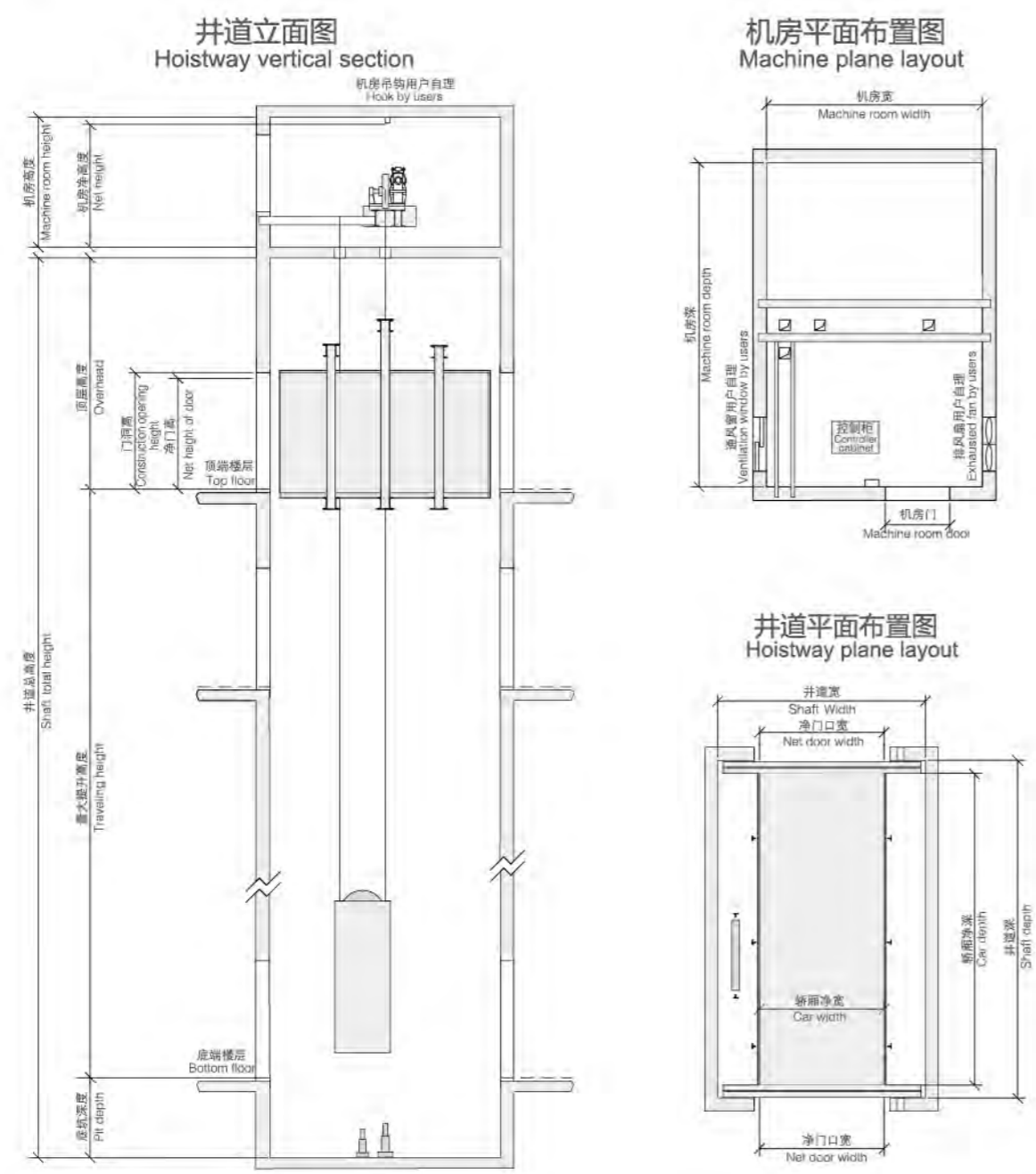
注：以上尺寸仅供设计参考，具体尺寸以合同签约时提供的土建图为准。
Note: Only for reference, final manufacture please follow drawing.

Car elevator construction parameters

汽车电梯土建参数

Dumbwaiter elevator construction parameters

杂物电梯土建参数



参数表 Specifications

电梯型号 Elevator model	额定载重 Rated capacity (Kg)	额定速度 Rated speed (m/s)	净门距 Net size of door (mm)	轿厢净尺寸 (mm) Net size of car			井道尺寸 (mm) Shaft size			机房尺寸 (mm) Machine room size			顶层高度 OH (mm)	底坑深度 Pit depth (mm)
				C.W	C.D	C.H	H.W	H.D	M.R.W	M.R.D	M.R.H			
DA	3000	0.25/0.5	2700×2200	2700	5500	2300	4400	6050	4400	6050	3000	4500	1500	
DA	5000	0.25/0.5	3000×2200	3000	8000	2300	4900	8550	4900	8550	3000	4500	1600	

注：以上尺寸仅供设计参考，具体尺寸以合同约定时提供的土建图为准。
Note: Only for reference, final manufacture please follow drawing.

参数表 Specifications

电梯型号 Elevator model	载重 Load (Kg)	速度 Speed (m/s)	轿厢外尺寸 Car size (mm)		开门尺寸 Door Opening Size (mm)		井道尺寸 Hoistway Size (mm)			机房 Machine Room (mm)		
			宽(W)	深(D)	宽(W)	高(H)	宽(W)	深(D)	底坑 Pit	顶层 Over Head	宽(W)	深(D)
DW	100	0.4	750	750	700	1000	1300	900	800	3000	2000	2000
DW	200		900	900	850	1200	1450	1050	1000	3000	2000	2000
DW	300		1000	1000	950	1200	1550	1150	1000	3000	2000	2000

注：以上尺寸仅供设计参考，具体尺寸以合同约定时提供的土建图为准。
Note: Only for reference, final manufacture please follow drawing.

以诚为德，用心服务

德尔法电梯以客户为本，诚信服务，用心诠释品质。从售前、到电梯安装以及售后维保，全程提供最贴心的精细化服务，努力将服务做得更好，领先服务赢得了客户青睐。

Sincerity as the moral, whole-hearted in service

Delfar elevator is customer-oriented, serve sincerely and interpret quality by heart. From before sales to elevator installation and after sales maintaining, we provide the most considerate and elaborate service during the whole process. We try our best to make our service much better, and that has wined mass of customers.

Concentration—24-hour at your service

Delfar has built up an in time, fast and efficient 24-hour emergency repair service network to give you satisfied service.

专心——全天候24小时，为您守候

德尔法建立了及时、快速、高效的24小时急修服务网络，全天候为您提供满意服务。

Elaboration— Careful training as for perfect running

To let the elevator serve you better, we will provide free training at the installing site. Thus, you can be familiar with the products faster, understand the fixing and maintaining techniques and extend the using durability of the equipment scientifically.

细心——悉心培训，旨在完美运行

为使电梯更好服务予您，我们将在安装现场免费提供培训，帮助您更快熟悉产品、了解产品的维修、保养技能，科学延长设备使用寿命。



Patience—regular maintenance, everlasting service

德尔法的服务贯穿电梯的整个生命周期，因此我们从制造、安装、维修、保养都为您完美解决。我们每月一次派专职人员进行设备的维护、保养工作，确保电梯长期安全运行，更好服务您的楼宇。

Patience—regular maintenance, everlasting service

The service of Delfar is through the whole life periods of the elevator, so we will be responsible for the manufacture, installation, fixing and maintenance. We will send professional supervisor to repair and maintain the elevator every month to ensure the long running of the elevator and better service for your buildings.

