

全国免费服务热线  
National Free Service Hotline

**400-8813-578**



## 德尔法电梯有限公司 Delfar Elevator Co.,Ltd.

地址：浙江省湖州市环渚路915号  
Add: No.915, Huanzhu Road, Huzhou, Zhejiang, China  
电话(Tel): +86-572-2090666(Chinese Speaking)  
+86-572-2235922(English Speaking)  
传真(Fax): +86-572-2090505(Chinese)  
+86-572-2235912(English)  
邮编(P.C): 313000  
E-mail: delfar@delfar.cn  
Http://www.delfar.cn

本印刷品仅供参考。本印刷品所载信息就产品及其特殊用途之适用性、适销性、品质或任何采购协议条款不构成任何明示或暗示的担保或承诺。  
The printed products are for reference only. The company has the right to change the designs and specifications of the products at any time. The information contained in the printed products does not constitute any express or implied guarantees or commitments for the products and its applicability, merchantability, and quality of special purposes, or any terms of Procurement Agreement.

2016年6月版  
Ver. 201606



## HOME ELEVATOR

家用电梯 Delfar lifts you UP  
世界向前，科技向上

**德尔法电梯有限公司**  
Delfar Elevator Co.,Ltd.

Delfar Elevator-----Safe, Hi-tech, Efficient

# 德尔法电梯——安全 科技 高效

高楼林立的城市，见证着日新月异的时代，  
诉说着现代人智慧、创新的故事.....

A city of skyscrapers , witnesses the fast-changing era  
Tells the story of modern wisdom and innovation

## 德尔法家用电梯 尊享“舒雅”生活

一切与“家”为之相关的东西，  
都不该只是仓促的选择。  
德尔法家用电梯，  
人性化安全设计、欧洲级环保标准、尊贵非凡格调，  
成就舒雅生活，有家的温度。

## Delfar home elevator Enjoy comfortable& elegant life

Everything relating to home,  
Should not be chosen in a hurry.  
Delfar home elevator,  
With humanized safety design,  
European environmental standard and high level style.  
Give you a comfortable elegant life and warmth.



## Company introduction

### 公司介绍

德尔夫法电梯有限公司是集电梯设计、制造、销售、安装与维保于一体的专业型电梯企业。公司地理位置极其优越，交通便捷，辐射广阔，以江南为中心，致力成为服务全球的最佳交通解决方案提供商。

公司严格按照ISO9001质量体系标准和欧洲标准组织生产，配备了世界一流的全套数控加工设备、机器焊接等自动化装备和精密的检测仪器，并依托全球领先的电梯控制技术，确保了产品品质的精湛卓绝，打造了无与伦比的电扶梯精品，奠定了企业雄厚的制造实力。

公司为满足客户多样化的需求，开发了乘客电梯、观光电梯、病床电梯、家用电梯、载货电梯、汽车电梯、小机房电梯、无机房电梯、自动扶梯和自动人行道等系列产品，并凭借其完善的全球化市场服务网络，为世界建筑楼宇提供了安全、科技、高效的解决之道，赢得了众多客户的信赖，建立了品牌极高的知名度和美誉度。

Delfar Elevator Co., Ltd. is a specialized elevator enterprise that designs, manufactures, sells, installs, maintains the elevators. The company enjoys a predominant geographical location, convenient transportation, broad market. Centered on Jiangnan, Delfar is committed to become the best transportation service solution provider of the globe.

The company strictly accords with the ISO9001 Quality System and European standard to organize the manufacture. Equipped with a full set of world-class numerical control machining equipment, automation equipment including welding machine and precise detecting instrument, relied on advanced world's leading elevator control technology, the company ensures excellent quality and creates incomparable elevators and escalators, which lays the foundation of solid manufacturing strength.

In order to satisfy customer's diversified requirements, we produce Passenger elevator, Observation elevator, Bed elevator, Home elevator, Freight elevator, Car elevator, SMR elevator, MRL elevator, Escalator and Moving walk etc. With perfect global marketing services network, Delfar provides a safe, technological, high efficient solution to the buildings of the world and wins the trust of numerous customers, establishing high popularity and reputation of the brand.

公司以客户为本，关注从设计、制造、安装到维保服务的整个电梯生命周期，为此，从人才出发，建立了专业型的人才体系和严谨科学的管理体系，采用了集CAD、CAM、ERP为一体的综合网络管理系统和“5S1A”的现场管理模式，为全球客户提供持续创新的产品解决方案和服务。

未来，德尔夫法电梯将继续秉承“互惠共赢”的价值观和“诚信经营、不断进取、奉献社会”的经营理念，竭诚为客户提供尽善尽美的运载产品和服务，成为客户的信赖伙伴。

Customer oriented, the company pays attention to the whole life cycle of lift from design, manufacture, installation to maintenance service. For this reason and based on talent, the company establishes a professional talent system and rigorous and scientific management system. With comprehensive network management system which integrates CAD, CAM, ERP into one and "5S1A" site management mode, the company provides continuous innovative product solutions and services to the global customers.

In the future, Delfar elevator will continue to adhere its value "mutually-beneficial and win-win cooperation" and business ideas "honest Management, Continuous progress and dedicate to society", Wholeheartedly provide customers with perfect transport products and services, becoming a reliable partner with our customer.



## Delfar Home Elevator 德尔法家用电梯

德尔法家用电梯采用欧洲标准的绿色环保要求，配置永磁同步无齿轮小型主机，节约了用电成本；无需机房要求的布局优越性，使得家用电梯的安装不受机房面积限制，为建筑自由设计提供了更多选择可能。专门针对住宅设计的轿厢装潢，使电梯与家融为一体，相互辉映，提高建筑的品味，彰显主人尊贵的身份。

Delfar home elevator meets the requirement of green environmental protection of the European standard and applies permanent magnet synchronous gearless small traction machine; The superiority of the layout (machine roomless) assures the installation of the home elevator without restrictions of the machine room space, which provides more choices of free designing the building. Designed specifically for the house, the car and home integrate as one, which improves the taste of the building, and shows the premier identity of the owner.

### 欧洲绿色环保标准：

健康环保、尊重自然

European green environmental protection standard:  
Healthy and environmental protection, respect the nature

### 无机房构造：

无限设计、节约空间

Machine roomless layout:  
Infinite design, space-saving

### 永磁同步无齿轮小型主机：

科技浓缩、节能省电

Permanent magnet synchronous gearless small traction machine:  
Condensed Technology, power-saving and energy-saving



### 定制化装潢：

融入家装、尊荣格调

Customized decoration:  
Home improvement, with glory style



伴您静享家的惬意

Cozy home, enjoy life

## 4 advantages, enjoy comfortable and elegant life

### 4大优势，尊享舒雅生活



3

#### 平稳上下，舒适到家

Stable travel up and down, carry comfortable to home

- VVVF变频变压调速技术，智能化精准数据，实现平缓加减速；  
VVVF frequency and transformer speed adjust technology, and intelligent accurate statistics, to realize stable speed change;
- 采用平滑运行曲线，依据人体感官反应，提升乘坐舒适度。  
Apply smooth travel route, and according to people sensor responses, to increase the comfort of traveling

4

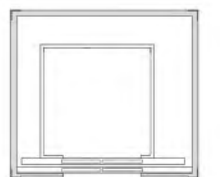
#### 完美规划，美学演绎

Perfect design, aesthetics display

- 无机房空间布局，结构灵活紧凑，提高空间利用率，巧妙融入建筑；  
Machine roomless space design, flexible and compact structure, Improve the spatial use, integrate the architecture artfully;
- 定制化装潢，迎合家装风格，提升建筑品味，彰显品质格调。  
Customized decoration, match the style of home decoration, Improve the taste of architecture, showing the quality and style.



旁开式  
Side-opening



中分式  
Center-opening

1

#### 安全警戒，多重呵护

Safe and secure, multiple care

- 轿厢内预置电话线，确保家人出入安全；  
Preset phone line inside car, to ensure the access security of the families;
- 紧急呼叫系统，便于突发情况下对外声援。  
Emergency call system, for people asking for help in emergency

2

#### 绿色节能，健康生活

Green energy-conserving, healthy living

- 永磁同步无齿轮曳引机，高效节能，只需220V常规电压，相当于一台普通冰箱；  
PM gearless synchronous traction machine, high efficiency and energy saving, only require 220V regular voltage, which is equal to one unit of refrigerator;
- 超低电磁设计，无辐射，不影响家人健康；  
Ultra-low electromagnetic design, radiation free, no influence to the health of the families;
- 静音设计，不影响日常生活及休息。  
Silence design, no influence to the daily life and rest



# Standard car of home elevator 标配轿厢



吊顶：D58033 ( 镜面不锈钢框架配筒灯 )  
轿壁：发纹不锈钢  
轿门：发纹不锈钢  
地板：PVC ( D61011 )  
操纵箱：D36378

Ceiling: D58033(Mirror St. St. frame with down light)  
Car wall: Hairline St. St.  
Car door: Hairline St. St.  
Floor: PVC (D61011)  
C.O.P: D36378



D36378



D35251



D58033

镜面不锈钢框架配筒灯  
Mirror St. St. frame with down light



基站门套：发纹不锈钢小门套  
基站厅门：发纹不锈钢  
其它层厅门和门套：发纹不锈钢厅门和小门套  
Main floor jamb: Hairline st.st. narrow jamb  
Main floor landing door: Hairline st.st.  
Other floor landing door and jamb: Hairline st.st. landing door and narrow jamb

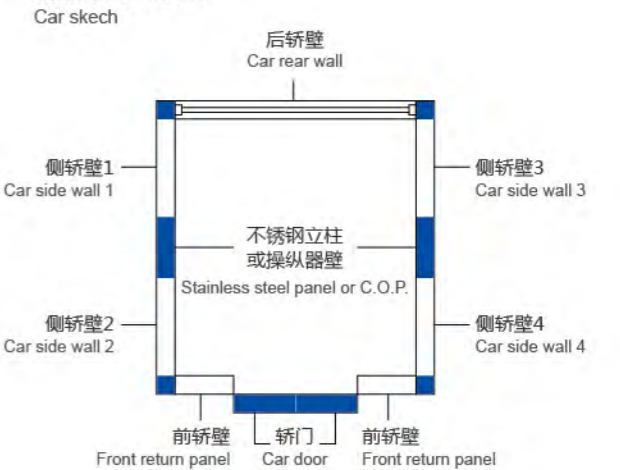
# Decoration car of home elevator 装潢轿厢



## ◀ D16919

吊顶：D58029 ( 镜面不锈钢框架，亚克力灯饰配筒灯 )  
轿壁：夹胶玻璃  
轿门：有框玻璃门 ( D20128 )  
地板：PVC ( D61028 )  
Ceiling: D58029 (Mirror St. St. acrylic lighting decoration down lights)  
Car wall: Glue-compressed glass  
Car door: Glass door (D20128)  
Floor: PVC (D61028)

### 轿厢布置示意图



### 轿厢布置列表 Car internal finish list

观光电梯类型代号 Car model	观光类型 Type	各部件材料 (参考示意图) Car internal finish list (By referring to the above sketch)						
		后轿壁 Car rear wall	侧轿壁1 Car side wall 1	侧轿壁2 Car side wall 2	侧轿壁3 Car side wall 3	侧轿壁4 Car side wall 4	前轿壁 Front return panel	轿门 Power
D16919-3A	三面观光 3-side sightseeing	夹胶玻璃 Glue-compressed glass	夹胶玻璃 Glue-compressed glass	夹胶玻璃 Glue-compressed glass	夹胶玻璃 Glue-compressed glass	夹胶玻璃 Glue-compressed glass	不锈钢 Stainless steel	不锈钢门 Stainless steel door
D16919-3B		夹胶玻璃 Glue-compressed glass	夹胶玻璃 Glue-compressed glass	不锈钢 Stainless steel	夹胶玻璃 Glue-compressed glass	不锈钢 Stainless steel	不锈钢 Stainless steel	不锈钢门 Stainless steel door
D16919-4A	四面观光 4-side sightseeing	夹胶玻璃 Glue-compressed glass	夹胶玻璃 Glue-compressed glass	夹胶玻璃 Glue-compressed glass	夹胶玻璃 Glue-compressed glass	夹胶玻璃 Glue-compressed glass	夹胶玻璃 Glue-compressed glass	有框轿门 Glass door
D16919-4B		夹胶玻璃 Glue-compressed glass	夹胶玻璃 Glue-compressed glass	夹胶玻璃 Glue-compressed glass	夹胶玻璃 Glue-compressed glass	夹胶玻璃 Glue-compressed glass	不锈钢 Stainless steel	有框轿门 Glass door
D16919-1R	单面观光 1-side sightseeing	夹胶玻璃 Glue-compressed glass	不锈钢 Stainless steel	不锈钢 Stainless steel	不锈钢 Stainless steel	不锈钢 Stainless steel	不锈钢 Stainless steel	不锈钢门 Stainless steel door

## Decoration car of home elevator 装潢轿厢



### ◀ D18520

**吊顶:** D58030 ( 镜面不锈钢, 亚克力 )  
**轿壁:** 三侧轿壁中间板镜面蚀刻不锈钢; 辅助板发纹不锈钢;  
 前轿壁发纹不锈钢  
**后壁扶手:** D77102  
**地板:** PVC ( D61030 )  
**Ceiling:** D58030 (Mirror st. st., acrylic)  
**Car wall:** Three sides car wall central panel mirror etched st.st.;  
 auxiliary panel hairline st. st.; front car wall hairline st. st  
**Rear wall handrail:** D77102  
**Floor:** PVC (D61030)

## Decoration car of home elevator 装潢轿厢



### ◀ D18922

**吊顶:** D58032 ( 亚克力灯饰、镜面不锈钢 )  
**轿壁:** 三侧轿壁中间板镜面不锈钢, 辅助板木纹钢板;  
 前轿壁镜面不锈钢  
**地板:** PVC ( D61032 )  
**Ceiling:** D58032 (Acrylic lighting decoration, mirror st.st.)  
**Car wall:** Three sides car wall central panel mirror st.st., auxiliary  
 panel wood steel plate; front car wall mirror st.st.  
**Floor:** PVC (D61032)

### ▶ D18621

**吊顶:** D58031 ( 钛金镜面不锈钢, 亚克力灯饰,  
 筒灯数量根据轿厢实际大小增减 )  
**轿壁:** 三侧轿壁中间板钛金镜面蚀刻不锈钢; 辅助板钛金  
 镜面不锈钢; 前轿壁钛金镜面不锈钢  
**两侧轿壁扶手:** D77009  
**地板:** PVC ( D61031 )  
**Ceiling:** D58031 (Ti-gold mirror st.st. acrylic lighting decoration,  
 the down light quantity is decided by the car actual size)  
**Car wall:** Three sides car wall central panel Ti-gold mirror etched st.st.  
 auxiliary panel Ti-gold mirror st.st.; front car wall Ti-gold mirror st.st.  
**Two sides handrail:** D77009  
**Floor:** PVC (D61031)



### ▶ D18816

**吊顶:** D58023 ( 钛金发纹不锈钢配筒灯 )  
**轿壁:** 侧壁木板, 后壁中间板钛金镜面蚀刻不锈钢, 辅助板木板  
**后壁扶手:** D77015 ( 实木圆扶手, 钛金支架 )  
**地板:** PVC ( D61001 )  
**Ceiling:** D58023 (Ti-gold hairline st. st. with down lights)  
**Car wall:** Two side wall wood, rear wall center panel Ti-gold mirror etched  
 st. st., auxiliary panel wood panel  
**Rear wall handrail:** D77015 (Wood round handrail, Ti-gold st.st. bracket)  
**Floor:** PVC (D61001)



# Signalization & Handrail 信号系统和扶手

操纵箱  
C.O.P



D36196 发纹不锈钢  
Hairline st.st.



7寸图片式液晶显示  
7" Picture type LCD display



8寸图片式液晶显示  
8" Picture type LCD display



10.4寸图片式液晶显示  
10.4" Picture type LCD display

嵌入式呼梯盒  
Embedded L.O.P



D36378  
标配 (Standard)  
发纹不锈钢面板, 蓝底白字  
16段码液晶显示  
Hairline st.st. faceplate, blue background  
white character 16 segments LCD display

壁挂式呼梯盒  
Surface mounted L.O.P



D35219  
单梯 Simplex

操纵箱  
C.O.P



D36375  
仅能置于轿厢后壁  
Can only put at the car rear wall

扶手  
Handrail



D77102  
发纹不锈钢扁扶手  
Hairline st.st. flat handrail



D77103  
钛金不锈钢扁扶手  
Ti-gold st.st. flat handrail



D77005  
发纹不锈钢圆扶手  
Hairline st.st. round handrail



D78006  
发纹不锈钢圆扶手  
Hairline st.st. round handrail



D77007  
钛金不锈钢圆扶手, 中间实木  
Ti-gold st.st. round handrail,  
central part solid wood

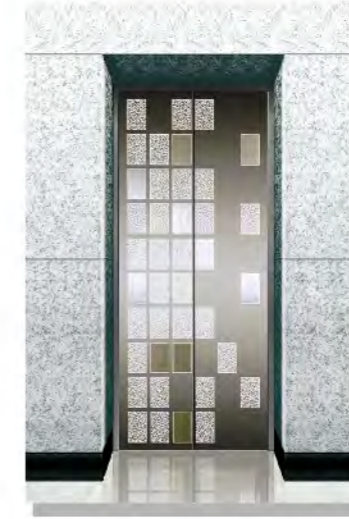


D77009  
钛金镜面不锈钢圆扶手  
Ti-gold mirror st.st. round handrail

# Landing door series 厅门系列



D20128  
门板型号: D20128  
门板材料: 有框玻璃门、发纹不锈钢框架  
小门套或门套材料: 发纹不锈钢  
Door model: D20128  
Door material: Glass door with hairline st.st. frame  
Narrow jamb or jamb material: Hairline st.st.



D20526  
门板型号: D20526  
门板材料: 镜面蚀刻不锈钢  
小门套或门套材料: 镜面不锈钢  
Door model: D20526  
Door material: Mirror etched st.st.  
Narrow jamb or jamb material: Mirror st.st.



D20530  
门板型号: D20530  
门板材料: 镜面蚀刻不锈钢  
小门套或门套材料: 镜面不锈钢  
Door model: D20530  
Door material: Mirror etched st.st.  
Narrow jamb or jamb material: Mirror st.st.



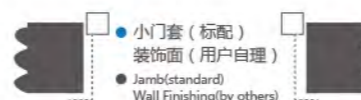
D20710  
门板型号: D20710  
门板材料: 钛金镜面蚀刻不锈钢  
小门套或墙套材料: 钛金镜面不锈钢  
Door model: D20710  
Door material: Ti-gold mirror etched st.st.  
Narrow jamb or jamb material: Ti-gold mirror st.st.



D20727  
门板型号: D20727  
门板材料: 钛金镜面蚀刻不锈钢  
小门套或墙套材料: 钛金镜面不锈钢  
Door model: D20727  
Door material: Ti-gold mirror etched st.st.  
Narrow jamb or jamb material: Ti-gold mirror st.st.



D20729  
门板型号: D20729  
门板材料: 玫瑰金镜面蚀刻不锈钢  
小门套或墙套材料: 玫瑰金镜面不锈钢  
Door model: D20729  
Door material: Rose-gold mirror etched st.st.  
Narrow jamb or jamb material: Rose-gold mirror st.st.





# Perfect function

## 完美功能

### 标准功能

### Standard Function

功能名称 Function name	功能说明 Function elucidation
电梯变频驱动 VVVF drive	精确调整电动机转速，令电梯启动、运行、停止时的速度曲线平滑、圆滑，获得良好的舒适感。 Motor rotating speed can be precisely adjusted to get smooth speed curve in lift start, travel and stop and gain the sound comfort.
门机变频驱动 VVVF door operator	精确调整电动机转速，使门机的开启、关闭更轻柔灵敏。 Motor rotating speed can be precisely adjusted to get the more gentle and sensitive door machine start / stop.
独立运行 Independent running	通过动作开关，使电梯不响应外召，仅响应轿内指令。 The lift can not respond to outer calling, but only respond to the command inside the car through the action switch.
满载自驶 Automatic pass without stop	当轿内挤满乘客或负载接近预定值，为保持最大运行效率，该轿厢将自动越过召唤层站。 When the car is crowded with the passengers or the load is closeto preset value, the car will automatically pass the calling landing in order to keep maximum travel efficiency.
开门时间自动调整 Automatically adjust door opening time	按照层站召唤或轿厢召唤的区别，自动调整保持开门时间。 Door-open time can be automatically adjusted according to the difference between landing calling or car calling.
本层重开门 Reopen with hall call	关门途中，可以按本层站召唤按钮使门重新开启。 In the door shutting process, press reopen with hall call button can restart the door.
即时关门 Express door closing	电梯停站开门到位时，按下关门按钮，门立即被关闭。 When the lift stops and opens the door, press door-shut button, the door will be closed immediately.
停梯开门 Car stops and door open	电梯减速平层，直到完全停稳后才开门。 The lift decelerates and levels, the door only opens after the lift comes to a complete stop.
指令登记删除 Command register cancel	如按错了轿内楼层指令按钮，只要把同一按钮连续按两次，就可取消已登记指令。 If you press the wrong floor command button in the car, twice continuous pressing of same button can cancel the registered command.
直接停靠 Direct parking	完全根据距离原则，平层无爬行，大大提高了运行效率。 It completely accords with distance principle with no crawling in the leveling. It greatly enhances the travel efficiency.
光幕保护 Photocell protection	门开启和关闭期间，用覆盖整个门高度的红外光探测乘客和物体的门保护装置。 In the door open and shut period, infrared light that covers the whole door height is used to probe the door protection device of both the passengers and objects.
指定停靠 Designated stop	由于某种原因，电梯在目的层无法开门，电梯将关门运行至下一指定层楼。 If the lift can not open the door in the destination floor out of some reason, the lift will close the door and travel to the next designated floor.
超载停梯 Overload holding stop	轿厢超载时，鸣响蜂鸣器并停止于该层站。 When the car is overload, the buzzer rings and stops the lift in the same floor.
防止失速内部计数器保护 Anti-stall timer protection	由于曳引钢丝绳打滑而无法正常运行时，电梯停止运行。 The lift stops operation due to slippery traction wire rope.
启动保护控制 Start protection control	电梯启动后在指定的时间内，没有离开门区，电梯停止运行。 If the lift does not leave door zone within the designated time after it gets started, it will stop the operation.
检修操作 Inspection operation	当进入检修状态时，轿厢以低速点动运行。 When the lift enters into inspection operation, the car travels at inching running.
故障自诊断 Fault self-diagnosis	控制器可记录最新的62个故障，以便快速排除故障，迅速恢复电梯运行。 The controller can record 62 latest troubles so as to quickly remove the trouble and restore the lift operation.
电梯门重复开关 Repeated door closing	有时因阻碍或干扰，电梯门未能关闭，电梯门会重复打开或关闭，直到杂物被清除。 If the lift can not close the door due to certain obstacle or interference, the lift will reopen or re-shut the door until sundries are eliminated.
上下越层及上下极限保护装置 Up/down over-run and final limit protection	该装置可有效地防止当电梯万一发生失控时的冲顶或撞底现象，使电梯更安全可靠。 The device can effectively prevent from the lift's surging to the top or knocking the bottom when it is out of the control. It results in the more safe and reliable lift travel.
下行超速保护装置 Down over-speed protection device	当电梯下降运行的速度超过额定速度的1.2倍时，该装置自动切断控制电源，使电机停止运转以阻止电梯超速下行；如电梯继续超速下行，其速度超过额定速度的1.4倍时，安全钳动作，强制电梯停止运行，保证安全。 When the lift downs 1.2 times higher than the rated speed, this device will automatically cut off control mains, stop the motor running so as to stop lift down at over-speed. If the lift continues to down at over-speed, and the speed is 1.4 times higher than rated speed, safety tongs act to force the lift stop in order to ensure the safety.
上行超速保护装置 Upward over-speed protection device	当电梯上行的速度超过额定速度的1.2倍时，该装置自动将电梯减速或制停。 When the lift ups 1.2 times higher than rated speed, the device will automatically decelerate or brake the lift.
轿内及层站微动指令按钮 Micro-touch button for car call and hall call	轿内操纵箱指令按钮及层站召唤按钮采用新型微动型按钮。 Novel micro-touch button is used for operation panel command button in the car and landing calling button.
轿内层楼、方向指示 Floor and direction indicator inside car	轿内显示电梯所在层楼及当前运行方向。 The car shows the lift floor location and current travel direction.
层楼层楼、方向指示 Floor and direction indicator in hall	层站显示电梯所在层楼及当前运行方向。 The landing shows the lift floor location and current travel direction.

功能名称 Function name	功能说明 Function elucidation
应急照明 Emergency car lighting	停电时，自动打开轿内应急照明。 Emergency car lighting automatically activated once power failure.
点动运行 Inching running	当进入紧急电动状态时，轿厢以低速点动运行。 When the lift enters into emergency electric operation, the car travels at low speed inching running.
五地通话装置 Five way intercom	通过对讲机，可让轿内、轿顶、电梯机房、井道底坑、救援值班室之间通话。 Communication amid car, car top, lift machine room, well pit and rescue duty room through walkie-talkie.
警铃 Bell	紧急时，连续按下轿内操纵箱上的警铃按钮，安装于轿厢顶上的电铃会鸣响。 In emergency conditions, if bell button above car operation panel is continuously pressed, electric bell rings on top of the car.
消防返回 Fire emergency return	启动基站或监控屏上的钥匙开关，所有召唤均被取消，电梯立即驶往基站层停靠，并自动开门。 If you start key switch in main landing or monitor screen, all the callings will be cancelled. The lift directly and immediately drives to the main floor and automatically opens the door.
轿厢风扇/照明自动开关 Car ventilation, light automatic shut off	在规定的时间内没有召唤或指令信号，轿厢内的风扇和照明会自动关闭，以节能。 If there is no calling or command signal within the stipulated time, the car fan and lighting will be automatically closed in order to save the energy.
轿厢到站钟 Car arrival gong	装于轿顶的电子钟的钟声告知候梯的乘客电梯已到站。 Arrival tong in the car top announces that the passengers arrive.
基站锁梯 Main floor key switch	通过钥匙开关，电梯可以被召唤到基站（服务完成后），并自动退出服务。 The lift can be called to main landing (after finishing the service) through the key switch and automatically exists the service.

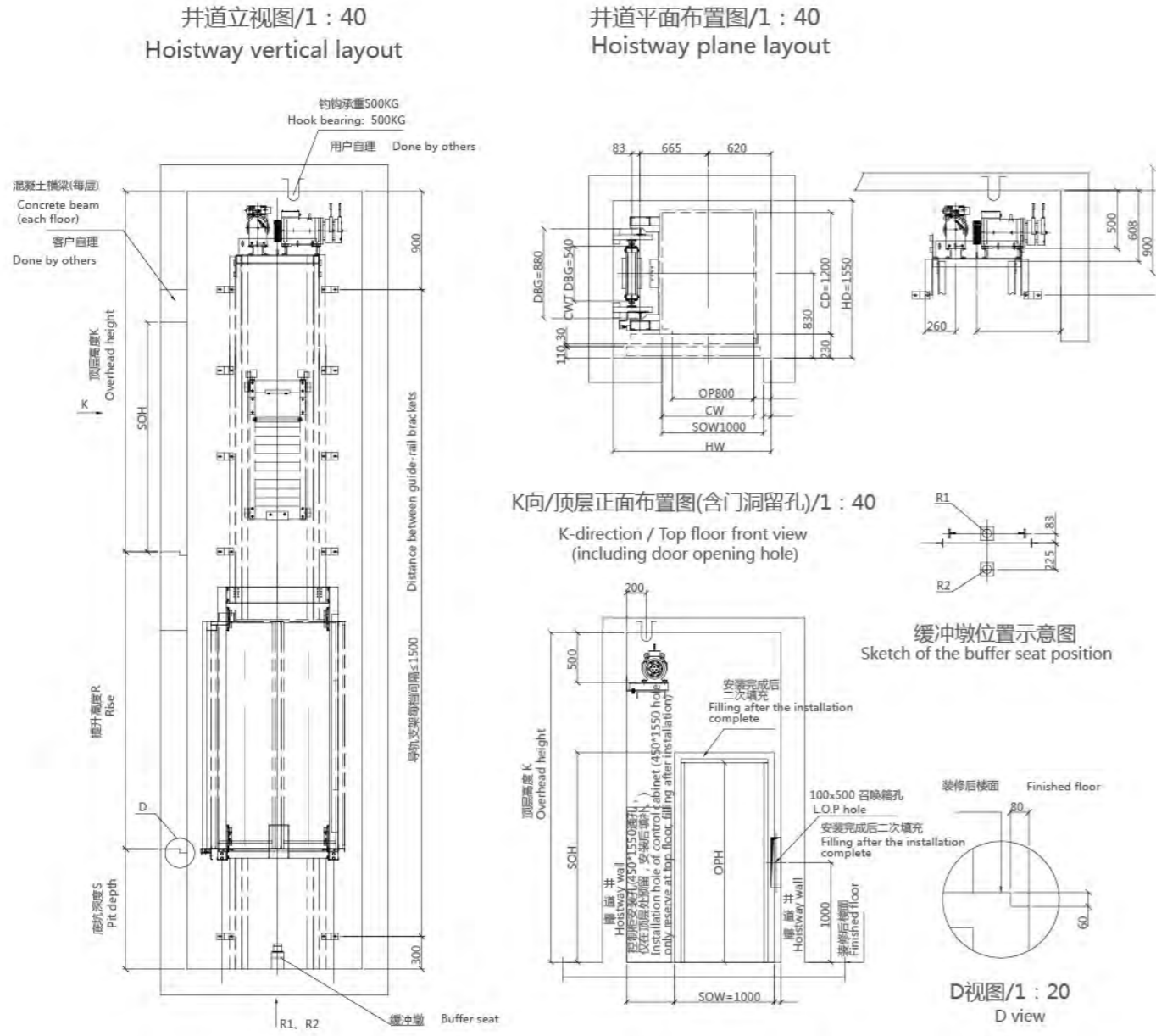
### 选配功能

### Optional Function

功能名称 Function name	功能说明 Function elucidation
停电应急平层 Leveling when power failure	正常电源断电时，充电式电池提供电梯电源，电梯驶往最近层站。 In normal power failure, the chargeable battery supplies the lift power. The lift drives to the nearest landing.
防捣乱 Anti-nuisance	当电梯轻载时出现超过三个指令时，为避免不必要停靠，轿厢内已登记的召唤将全部自动消除。 In the light lift load, when three more commands appear, in order to avoid the unnecessary parking, all the registered callings in the car will be cancelled.
提前开门 Open the door in advance	电梯减速进入开门区域，自动开门，提高运行效率。 When the lift decelerates and enters into door open zone, it automatically opens the door to enhance the travel efficiency.
群控功能 Group control	用于三台或三台以上同型号电梯成组控制时使用，使梯群能自己选择最合适的应答，避免电梯重复停梯，缩短乘客候梯时间，提高运行效率。 When three or more same model lift groups are controlled in use, the lift group can automatically choose the most appropriate response. It avoids the repeated lift parking, reduces the passengers' waiting time and increases the travel efficiency.
并联功能 Duplex control	用于两台同型号电梯，通过电脑的调度来统一响应召唤信号，以最大限度地减小乘客的候梯时间，以提高运行效率。 Two sets of same model lifts can unanimously respond the calling signal through the computer dispatch. In this way, it reduces the passengers' waiting time to the greatest extent and enhances the travel efficiency as well.
上班高峰服务 On-duty peak service	在预定上班时间内，基站向上的运输特别繁忙时，向基站不断派梯以满足上班时高峰需要。 Within the preset on-duty time, upward transport from the home landing is extremely busy. The lifts are continuously dispatched to the home landing in order to satisfy on-duty peak service.
下班高峰服务 Off-duty peak service	在预定下班时间内，向顶层派梯满足下班时高峰需要。 Within the preset off-duty period, the lifts are continuously dispatched to top floor in order to satisfy off-duty peak service.
开门时间延长 Door open time extending	按轿厢内的专用按钮，可使门在一段时间内保持开门状态。 Press special button in the car, the lift door keeps open for certain period of time.
语音报站 Voice announcer	在正常运行到站的情况下，利用语音装置告知乘客有关信息。 When the lift normally arrives, voice announcer informs the passengers about the relevant information.
轿厢副操纵箱 Car assistant operation box	用于大载重量电梯或候梯人群稠密大楼中的电梯，以便让轿厢内更多的乘客方便使用。 It is used in the large loading weight lifts or the lifts with crowded passengers so that more and more passengers can use the car.
残疾人操纵箱 Operation box for the handicapped	便于让轿厢内坐轮椅的乘客及视觉障碍的乘客方便使用。 It is convenient for the wheelchair passengers and those who have vision problems.
智能召唤服务 Intelligent calling service	通过专用的智能输入设备，可使轿厢指令或厅外召唤锁定或接通。 The car command or hoist-way calling can be locked or connected through special Intelligent Input.
IC卡控制功能 IC card control function	所有（部分）层站须经授权，方可通过IC卡输入轿厢指令运行电梯。 All (partial) landings can only input car commands through IC Card after the authorization.

# Home elevator construction parameter 家用电梯土建参数

# High quality service, another important product 优质服务，另一项重要产品



为了让每一位客户都能享受到最好的服务，我们提供免费24小时热线电话：4008813578，通过分布在全国各地的专业保养服务机构，确保您能在最短的时间内享受到最为便捷的服务。

To let every customer enjoy the best service, we offer a free 24 hour hotline:4008813578. Through professional maintenance services across the country, we are sure that you can enjoy the most convenient service in the shortest possible time.

畅通的沟通渠道  
Open channels of communication

运行效率的专业评估及改进  
Efficiency of professional evaluation and improvement



专业的售后服务体系  
Professional after-sales service system

家用电梯参数表 Home elevator specifications

额定载重 Loading kg	额定速度 Speed m/s	最大提升 Max rising m	最大站层 Max floors	轿厢净尺寸 Car dimension CW x CD x CH (mm x mm x mm)	开门 净尺寸 Door size OP x OPH (mm x mm)	开门形式 Door opening	标准井道 净尺寸 Shaft dimension HW x HD (mm x mm)	标准底坑 净深 Standard pit PD(mm)	最小顶层 净高 Min. overhead OH(mm)	动力电源 Power
320	0.4	12	5	1000x1000x2200	800x2000	旁开两扇门 2 panel side opening	1650x1550	600	3200	220V 1P
400	0.4	12	5	1000x1050x2200	800x2000	旁开两扇门 2 panel side opening	1650x1550	600	3200	220V 1P
320	0.4	12	5	950x1100x2200	700x2000	中分两扇门 2 panel center opening	1600x1500	600	3200	220V 1P
400	0.4	12	5	1000x1100x2200	750x2000	中分两扇门 2 panel center opening	1650x1500	600	3200	220V 1P

注：上述尺寸供设计参考，具体尺寸以合同约定时提供的土建图为准。  
Note: Only for reference, final manufacture please follow drawing.

德尔法电梯售后服务机制  
Delfar elevator after-sales service mechanism