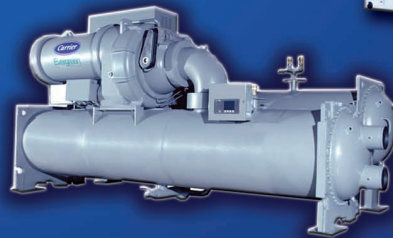
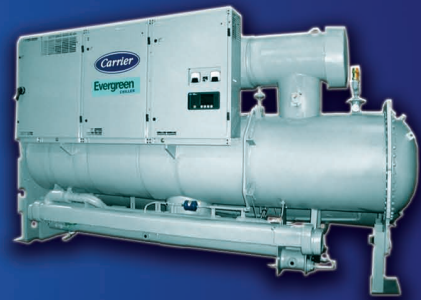
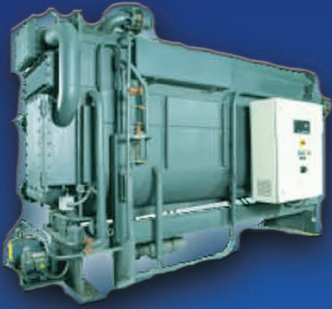


Carrier



Building Systems and Services







THE LARGEST CARRIER JOINT VENTURE HVAC DISTRIBUTION COMPANY OUTSIDE USA

AHI Carrier formerly known as Airconditioning & Heating International (AHI) became a Carrier Joint Venture Company on December 18th, 2008.

The partnership between Carrier and AHI dates back to December 1997 when the first agreement was signed for distribution of Carrier products in Russia and all of CIS countries (12 countries).



In 1999,  &  Airconditioning entered into a Joint Venture and as a consequence the Toshiba range of airconditioning products were added for distribution in our territories.

Success came early and in 2000 Carrier rewarded us by expanding our distribution rights to East and Central Africa (15 countries).

Since the creation of "AHI Carrier" Joint Venture more countries have been added to include Middle East, Central Europe, Australia & New Zealand (18 countries).

AHI Carrier keeps a flexible and aggressive forward sales structure (sales offices & dealer network) and builds sales support functions in a centralized back office (Sharjah, U.A.E). The strategy focuses on economies of scale and allows AHI Carrier to quickly respond to opportunities in the sales area, parallelly building a competitive system of product specification and technical support, logistics coordination, finance & M.I.S.

The most critical factor contributing AHI's successful track record of profitable growth has been its commitment to service – and this commitment will become increasingly important in the future.

AHI Carrier runs  stores in Australia, New Zealand & Middle East where more such stores are being added.  stocks and sells a full range of HVACR parts, consumables & tools for residential and commercial applications.

AHI Carrier now distributes  &  HVAC products in 44 countries across 3 continents.

List of Sales and Service offices spread across the 3 continents :

MIDDLE EAST

- United Arab Emirates - Sharjah
- Bahrain

RUSSIA & CIS

- Russia - Moscow
- Ukraine - Kiev
- Kazakhstan - Almaty
- Azerbaijan - Baku

CENTRAL EUROPE

- Slovakia - Nitra
- Czech - Prague & Ceske Budejovice
- Austria - Vienna & Linz



AUSTRALIA

- New South Wales - Sydney, Wollongong & New Castle
- Queensland - Brisbane & Townsville
- Tasmania - Hobart
- Victoria - Melbourne
- South Australia - Adelaide
- West Australia - Perth
- ACT - Canberra

NEW ZEALAND

- Auckland
- Wellington
- Christchurch

OUR VALUES

CUSTOMER CARE

Providing optimal service to our customers is a top priority. In every vertical market we serve and we aim to achieve 100% satisfaction, building a strong, loyal and ever-expanding customer base.

PERFORMANCE

Our performance is a vital reflection of who we are and a testament to our ability to deliver on promises to our customers. We are committed to achieving world-class performance and strive for continuous growth and improvement to reinforce Carrier's leadership position.

EMPLOYEE DEVELOPMENT

Our employees are our most valuable asset. We believe in building a culture of inspiration and mutual respect – where personal and professional development is encouraged, and diversity is celebrated.

BUSINESS PRACTICES

Our business is driven by a fundamental sense of global citizenship and responsibility. We maintain the highest ethical and environmental standards, and actively support the communities in which we do business.

ABOUT CARRIER

Carrier is a part of United Technologies Corporation, USA. With 2008 revenues of \$58.7 billion, UTC is a conglomerate operating in the high technology space. The UTC group operates in aerospace & building systems with companies like Carrier (air-conditioning), Otis (Elevators), Pratt & Whitney (Jet-engines), Sikorsky (Helicopters), UTC Fire & Security (Chubb & Kidde), Hamilton Sundstrand and UTC Power.

Founded in 1915 by Dr. Willis Carrier, the inventor of modern air-conditioning, Carrier has developed into being the world's largest provider of air-conditioning, heating and commercial refrigeration systems (HVACR) with operations in more than 170 countries, employing approximately 41,000 people worldwide and revenues of \$14.9 billion in 2008. Over the decades, Carrier name has become synonymous with reliability, innovation, commitment, superior technology, cutting-edge manufacturing and world-class performance. It also has one of the most prestigious installation bases in the world.



ABOUT COMMERCIAL BUSINESS

The HVAC systems of a facility are vital to the operation and productivity of any business. An optimized HVAC system not only provides the right cooling / heating solution but also saves energy for a sustainable environment & business.

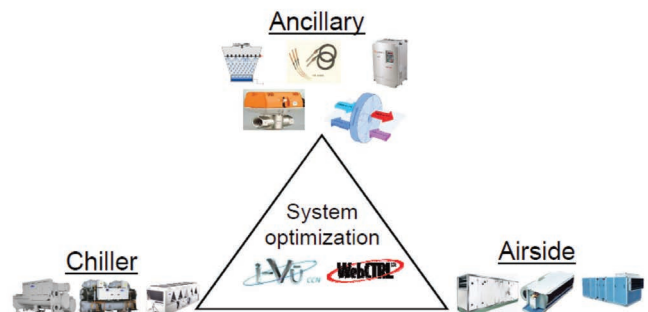
Today energy saving is a key point of discussion in all forums and sincere efforts are being made across the globe to ensure saving of energy by all means. In a typical commercial building, a major amount of energy is consumed by HVAC system so it becomes important not only to select energy efficient equipments but also an optimize system in which each equipment complement & facilitates other to perform in the most efficient way.

Keeping in view the above important aspect, we offer to our valued customers an optimized design with appropriate selection of key equipments in a HVAC system - Chillers, AHU, FCU, VAV, heat rejection equipment like Cooling Towers, Dry Coolers / Condensers, which are selected for the most optimized performance & integrated together thru our advance automation package to have an overall energy efficient system with convenience of operation.

TOTAL SYSTEM SOLUTION APPROACH

With our diverse experience from sub zero temperature regions to hot & humid regions, we bring a range of solution for various applications.

We offer latest software HAP (Hourly Analysis Program) to calculate the building heat load. We use CSO (Chiller system Optimizer) to do energy simulation of HVAC system for selecting an optimum combination of chillers, cooling towers and pumps. With the addition of Chilled Water System Manager, we provide an optimized plant room control solution that meets the requirements for today and the ability to adapt to future.





Description	Model	Nominal Cooling Capacity (KW)	Nominal Heating Capacity (KW)	Page No.
CHILLERS				
AIRCOOLED LIQUID CHILLERS				
Air-Cooled Scroll Chiller - Aquasnap Junior	30RA	4.9 - 14.0		1
Air-Cooled Scroll Chiller	30RB (NGA)	16.5 - 33.6		1
Air-Cooled Scroll Chiller	30RBS	39.3 - 157.1		2
Air-Cooled Scroll Chiller	30RB	163 - 753		2
Air-Cooled Screw Chiller	30XA	261 -1618		3
WATERCOOLED LIQUID CHILLERS				
Water Cooled Scroll Chillers	30RW	20.2 - 310		4
Water Cooled Screw Chiller	30HXC	291 - 425		4
Water Cooled Screw Chiller	30XW/30XWH	476 - 1764		5
Water Cooled Screw Chiller (with Variable Speed Drive)	23XRV	1055 - 1935		6
Hermetic Centrifugal Liquid Chiller	19XR/V	700 - 5300		7
Dual Compressor Hermetic Centrifugal Liquid Chiller	19XRD	8780 - 10548		7
CONDENSERLESS LIQUID CHILLER				
Scroll Chiller	30RWA	19 - 291		8
Screw Chiller	30HXA	264 - 931		8
ABSORPTION CHILLERS				
Double Effect - Direct Fired Absorption Chiller	16DN	352 - 2321		9
Double Effect - Steam Fired Absorption Chiller	16DE	528 - 2321		9
Single Effect - Steam / Hot Water Fired Absorption Chiller	16JL/JLR	527 - 2321		10
AIR TO WATER HEAT PUMP - CHILLERS				
Air to Water Scroll Heat Pump	30RQ (NGA)	16.1 - 33	17.4 - 34.3	11
Air to Water Scroll Heat Pumps	30 RQS	38 - 150	41 - 157	11
Ductable Air to Water Heat Pumps	30RYH	17.8 - 76	18.3 - 78	12
Air to Water Scroll Heat Pump	30RQ	174 - 465	189 - 548	12
AIR HANDLING UNITS				
Air Handling Unit with Eurovent Certification	39HQ			13
Air Handling Unit with & without Non Thermal Bridging Profiles	39G / 39GK			14
Air Handling Unit	39CBFI			14
FAN COIL UNITS				
HYDRONIC FAN COIL UNITS				
Multi Position Fan Coil Unit	42N			15
Cassette Type Fan Coil Unit	42GW			15

Horizontal Concealed Type Fan Coil Unit (V-shaped Coil)	42DW	16
High-Wall Fan Coil Unit	42WH	16
Low Height Horizontal Concealed Fan Coil Unit	42CE	17
Cabinet Type Units	42C/V	17
High ΔT Horizontal Fan Coil Unit (for district cooling application)	42C/D	18
Ducted Fan Coil Unit	42EM	18
Plenum Fan Coil Unit	40LM	19
High Static Chilled Water Fan Coil Unit	40APB	19
Chilled & Hot Water Single Skin Fan Coil Units	40HW & 40RW	20
Horizontal or Vertical Chilled Fan Coil Unit (Hydra Series)	39TDH/V	20

FAN COIL CONTROL

Thermostats	TYPE A/B	21
Thermostat	TMS810	21
Controller	HDB	21
Communicating Controller	NTC	21

CONDENSING UNITS

Air Cooled Scroll Condensing Unit	38AP D/S	73 - 381	22
Air Cooled Scroll Condensing Unit	38RA	39.9 - 151	22

ROOFTOP PACKAGED UNITS

Air Cooled Scroll Rooftop Unit	50TC	18 - 69	23
--------------------------------	------	---------	----

DISCLAIMER :

1. All the data in this catalogue is for general & quick reference only.
2. Cooling and heating capacities mentioned for different products are nominal capacities at standard operating conditions.
3. For details, please contact your local AHI-Carrier representatives for a detailed selection at you specific operating conditions.
4. MEPS (Minimum Energy Performance Standards):
The new MEPS standards for chillers is effective from the 1st July 2009. This standard may limit the ability to

offer all models within the chiller range. Please consult your AHI-Carrier representative for more details.

5. Product information in this catalogue may have been sourced from overseas suppliers/entities and has not been created by AHI Carrier, therefore, AHI Carrier does not necessarily warrant the accuracy of the content and/or detail of such information. To the extent permitted by law, AHI Carrier is not liable for any errors, omissions or misrepresentations in such information or for any loss or damage suffered by persons who use or rely on the information.
6. Specifications are subject to change due to continuous improvements in the products. Please check with your AHI-Carrier representative for updated information.



AIR-COOLED LIQUID CHILLER

30 RA

Air-Cooled Scroll Chiller – Aquasnap Junior



Model	Nominal Cooling Capacity *	Operating Weight	Dimensions (mm)
	Kw	Kg	L x W x H
30RA005	5.15	71	800 x 300 x 590
30RA007	6.63	73	800 x 300 x 590
30RA009	7.63	85	800 x 300 x 803
30RA011	9.59	108	800 x 300 x 1264
30RA013	11.23	118	800 x 300 x 1264
30RA015	14.7	135	800 x 300 x 1264

(Cooling Capacity 5.2 KW ~ 14.7 KW)

- R-410a / R-407c refrigerant
- Scroll Compressors
- Pro Dialog Micro processor control
- With integrated hydronic module & single pump (3 speed)

30RB (NGA)

Air-Cooled Scroll Chiller



Model	Nominal Cooling Capacity *	Operating Weight	Dimensions (mm)
	Kw	Kg	L x W x H
30RB017	16.5	189	1136X 584X1578
30RB021	21.6	208	1136X 584X1578
30RB026	27.6	255	1002X 824 X 1790
30RB033	33.6	280	1002X 824 X 1790

(Cooling Capacity 16.5 KW ~ 33.6 KW)

- R-410a refrigerant
- Pro Dialog Micro processor control
- Low noise new generation fans
- Vertical air heat exchanger coils
- With or without hydronic module
- Standard electrical disconnect switch



AIR-COOLED LIQUID CHILLER

30 RBS

Air-Cooled Scroll Chiller



(Cooling Capacity 39 KW ~ 157 KW)

- High Energy efficiency
- R-410 refrigerant
- Low noise multi Scroll Compressors
- Pro Dialog Micro processor control
- Low noise Two speed , new generation flying bird IV fans, made of composite material
- Optional hydronic module is available
- Six pumping options including single or dual pumps (duty standby) and variable speed pumps

Model	Nominal Cooling Capacity *	Operating Weight	Dimensions (mm)
	Kw	Kg	L x W x H
30RBS039	39.3	458	2050X 1061X 1330
30RBS045	44.6	466	2050X 1061X 1330
30RBS050	51.9	489	2050X 1061X 1330
30RBS060	58.4	515	2050X 1061X 1330
30RBS070	66.7	502	2050X 1061X 1330
30RBS080	78.6	533	2050X 1061X 1330
30RBS090	89.4	835	2050X 2258X 1330
30RBS100	99.9	845	2050X 2258X 1330
30RBS120	117	876	2050X 2258X 1330
30RBS140	134.3	982	2050X 2258X 1330
30RBS160	157.1	1046	2050X 2258X 1330

30 RB

Air-Cooled Scroll Chiller



(Cooling Capacity 163 KW ~ 662 KW)

- R-410a refrigerant
- Low Noise Multi Scroll Compressors
- Low noise 4th Generation Low noise Flying Bird fans
- Pro Dialog Micro processor control
- Hydronic module option - Single OR Dual pump upto 500 kW cooling capacity
- Option of High pressure or Low pressure pump

Model	Nominal Cooling Capacity *	Operating Weight	Dimensions (mm)
	Kw	Kg	L x W x H
30RB162	163	1810	2410 x 2253 x 2297
30RB182	173	1902	2410 x 2253 x 2297
30RB202	193	2002	2410 x 2253 x 2297
30RB232	227	2012	2410 x 2253 x 2297
30RB262	263	2180	2410 x 2253 x 2297
30RB302	293	2760	3604 x 2253 x 2297
30RB342	328	2956	3604 x 2253 x 2297
30RB372	359	2984	3604 x 2253 x 2297
30RB432	418	3632	4798 x 2253 x 2297
30RB602	596	5120	5992 x 2253 x 2297
30RB672	662	5289	5992 x 2253 x 2297

30XA

Air-Cooled Screw Chiller



(Cooling Capacity 268 KW ~ 1605 KW)

- Available in 20 models
- CLASS A Energy Efficiency, certified by Eurovent
- R-134a refrigerant
- All Aluminium Micro Chanel Heat Exchanger(MCHX) with increased corrosion resistance
- 30% reduction in refrigerant charge through the use MCHX
- Semi Hermetic Twin Rotor Screw compressor
- Integrated hydronic module option with pump & expansion tank upto 500 kW capacity
- Economizer system with electronic expansion device for increased cooling capacity.
- Unit available with multiple level of sound attenuation
- Touch Screen Pro Dialog Micro processor control
- Industry leading full and part load energy efficiency. All high efficiency units are in Eurovent Class A EER, Average integrated part load value (IPLV) of 4.60 kW/kW
- Optional Hydronic module pumping package in models up to 508 kW. Hydronic module pumping package consisting of low or high pressure water pump, Single or dual pumps with operating time balancing and automatic change over to the back up pump if a fault develops, Water filter, Expansion tank, Aluminium clad thermal insulation, Pressure gauge to check water filter pressure drop, and measure the system water flow rate.

Model	Nominal Cooling Capacity *	Operating Weight	Dimensions (mm)
	Kw	Kg	L x W x H
30XA0252	268	3840	2604 x 2253 x 2297
30XA0302	293	3880	2604 x 2253 x 2297
30XA0352	320	3920	2604 x 2253 x 2297
30XA0402	382	4780	4798 x 2254 x 2297
30XA0452	438	4850	4798 x 2254 x 2297
30XA0502	492	5330	5992 x 2254 x 2297
30XA0602	605	6260	7186 x 2254 x 2297
30XA0702	653	6410	7186 x 2254 x 2297
30XA0752	706	6710	7186 x 2254 x 2297
30XA0802	764	7010	7186 x 2254 x 2297
30XA0852	802	7560	8380 x 2254 x 2297
30XA0902	869	7860	8380 x 2254 x 2297
30XA1002	951	8440	9574 x 2254 x 2297
30XA1102	1116	10440	11962 x 2254 x 2297
30XA1202	1216	10880	11962 x 2254 x 2297
30XA1302	1296	11260	11962 x 2254 x 2297
30XA1352	1382	11620	11962 x 2254 x 2297
30XA1402	1426	4250 / 8380	14372 x 2254 x 2297
30XA1502	1478	4250 / 8530	14372 x 2254 x 2297
30XA1702	1605	7560 / 7560	16760 x 2254 x 2297



WATER-COOLED LIQUID CHILLER

30RW

Water Cooled Scroll Chiller



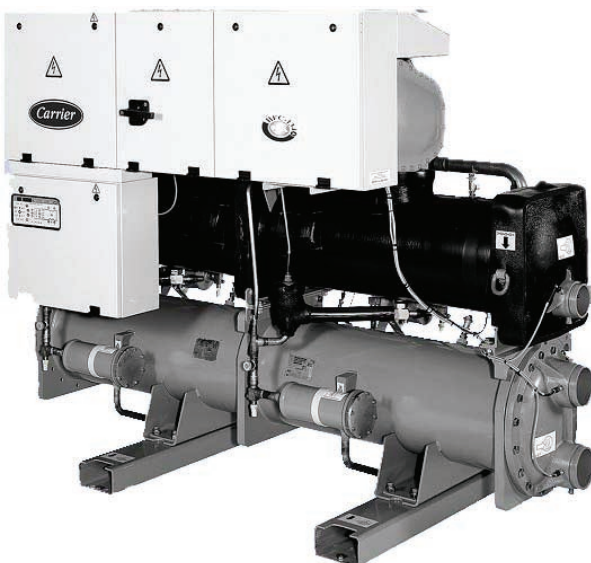
(Cooling Capacity 20 KW ~ 310 KW)

- R-407c refrigerant
- Low noise multi Scroll Compressors
- Pro Dialog Micro processor control
- Integrated hydronic Module option for evaporator & condenser (Variable speed for condenser)
- Space saving compact design, No plant room required, Easy to install
- Automatic change over to the back up pump if a fault develops. Water filter. Expansion tank
- Head pressure control through optional variable speed condenser water pump with year round operation down to -15°C OAT.

Model	Nominal Cooling Capacity *	Operating Weight	Dimensions (mm)
	Kw	Kg	L x W x H
30RW020	20.2	316	1204 x 1750 x 695
30RW025	25.9	335	1204 x 1750 x 695
30RW030	29.9	338	1204 x 1750 x 695
30RW040	39.7	367	1204 x 1750 x 695
30RW045	45.3	387	1204 x 1750 x 695
30RW060	56	683	2004 x 1750 x 895
30RW070	70	713	2004 x 1750 x 895
30RW080	80	755	2004 x 1750 x 895
30RW090	91	781	2004 x 1750 x 895
30RW110	108	864	2004 x 1750 x 895
30RW120	123	937	2004 x 1750 x 895
30RW135	139	956	2004 x 1750 x 895
30RW150	149	977	2004 x 1750 x 895
30RW160	162	1079	2950 x 1993 x 922
30RW185	183	1144	2950 x 1993 x 922
30RW210	216	1357	2950 x 1993 x 922
30RW245	247	1471	2950 x 1993 x 922
30RW275	284	1471	2950 x 1993 x 922
30RW300	310	1491	2950 x 1993 x 922

30HXC

Water Cooled Screw Chiller



Model	Nominal Cooling Capacity *	Operating Weight	Dimensions (mm)
	Kw	Kg	L x W x H
30HXC080	290	2274	2558 x 980 x 1800
30HXC090	315	2279	2558 x 980 x 1800
30HXC100	345	2302	2558 x 980 x 1800
30HXC120	412	2615	3275 x 980 x 1816

(Cooling Capacity 290 KW ~ 412 KW)

- R-134a refrigerant
- Twin Rotor Screw Compressors in two independent refrigerant circuits
- Equipped with Pro Dialog Plus control to optimise the efficiency of the refrigerant circuit
- 980 mm wide for two compressor models, or 1015 mm for three or four compressor models.
- Mechanically cleanable evaporators and condensers.
- Available in a high condensing temperature-condenser leaving temp up to 63 degC, and non-reversible heat pump version

30XW/30XWH

Water Cooled Screw Chiller



(Cooling Capacity 477 KW ~ 1765 KW)

(Heating Capacity 507 KW ~ 1898 KW)

- Available in 27 models,
- CLASS A Energy Efficiency, certified by Eurovent
- High efficiency & low noise New Twin rotor compressor
- R-134a refrigerant
- Touch screen Pro Dialog Micro processor control
- Compact design, less space for installation
- 30XWH range for heating applications upto 63DegC
- Twin-rotor screw compressors with a variable capacity valve.
- Touch-screen Pro-Dialog control system.
- Flooded heat exchangers that are mechanically cleanable
- To meet to all environmental and economic requirements, the 30XW is available in two versions:

(30XW-) offers an optimised balance of technical and economical aspects, while at the same time boasting superior energy efficiency.

(30XW-P) offers unequalled energy efficiency to satisfy the most stringent demands of building owners wanting to reduce operating costs to the minimum.

Standard Efficiency units (30XW/30XWH)

Model	Nominal Cooling Capacity *	Nominal Heating Capacity *	Operating Weight	Dimensions (mm)
	Kw	Kw		
30XW452	477	507	2575	2742 x 936 x 1693
30XW552	537	585	2613	2742 x 936 x 1693
30XW602	543	609	2644	2743 x 936 x 1693
30XW652	682	723	3247	3059x 1044x 1848
30XW702	735	784	3266	3059x 1044x 1848
30XW802	796	857	3282	3059x 1044x 1848
30XW852	848	937	3492	2780x 1044x 1848
30XW1002	1026	1089	5370	4025 x 1036 x 1870
30XW1052	1071	1131	5408	4025 x 1036 x 1870
30XW1152	1148	1263	5705	4093 x 1036 x 1926
30XW1252	1269	1314	7066	4730 x 1162 x 2051
30XW1352	1372	1424	7267	4730 x 1162 x 2051
30XW1452	1505	1565	7305	4730 x 1162 x 2051
30XW1552	1628	1686	7337	4730 x 1162 x 2051
30XW1652	1665	1809	8681	4790 x 1902 x 1541
30XW1702	1738	1884	8699	4790 x 1902 x 1541

High Efficiency units (30XW-P/30XWH-P)

Model	Nominal Cooling Capacity *	Nominal Heating Capacity *	Operating Weight	Dimensions (mm)
	Kw	Kw		
30XW-P 512	514	557	2981	3059 x 936 x 1743
30XW-P 562	582	659	3020	3059 x 936 x 1743
30XW-P 712	742	791	3912	3290 x 1065 x 1950
30XW-P 812	794	871	3947	3290 x 1070 x 1950
30XW-P 862	853	932	3965	3290 x 1070 x 1950
30XW-P 1012	1048	1133	6872	4795 x 1039 x 1997
30XW-P 1162	1167	1263	6950	4795 x 1039 x 1997
30XW-P 1312	1322	1428	9099	4812 x 1935 x 1541
30XW-P 1462	1478	1610	9307	4812 x 1935 x 1541
30XW-P 1612	1634	1762	10910	4832 x 2129 x 1594
30XW-P 1762	1765	1898	10946	4832 x 2129 x 1594



WATER-COOLED LIQUID CHILLER

23 XRV

Water Cooled Screw Chiller (with Variable Speed Drive)



(Cooling Capacity 1055 KW ~ 1935 KW)

- Best in class Efficiency - Highest energy efficiency (IPLV of 10.6)
- Most Advanced tri-rotor screw compressor design
- R-134a refrigerant
- Capacity control by Variable Speed Drive, eliminates use of slide valve
- Power factor above 0.99 at all load conditions
- Very low inrush current
- Highly reliable operation even in worst operating conditions
- Heavy Duty ASME heat exchanger
- Superior oil management/cold condenser water operation
- LCD control display
- Microprocessor-based Product Integrated Control (PIC) III
- Multilingual display
- Can be dismantled and reassembled at site
- Refrigerant cooled, Unit-mounted VFD with single point connection
- Take apart construction reduces installation cost. Optional isolation valves allow storage of refrigerant in the chiller, reducing service time and expense. Evaporator and condensers are available with standard nozzle in head or optional marine style evaporator and condenser water boxes with 1, 2 or 3 water pass configurations.



WATER-COOLED LIQUID CHILLER

19 XR / XRV

Hermetic Centrifugal Liquid Chiller

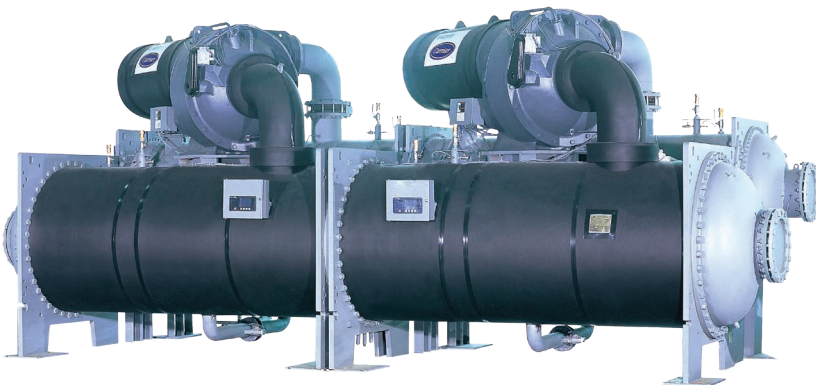


(Cooling Capacity - 700 KW ~5300KW)

- R-134a refrigerant
- The positive pressure design eliminate the requirement of purge unit.
- Mix-match capability - the chiller provide a complete line of compressors and heat exchanger to provide the desired capacity and efficiency
- Modular Construction - Cooler, condenser and compressor assemblies are completely bolted together, ideal for replacement project.
- Advance controls - Microprocessor controls with direct digital PIC, Chillervisor, CCN

19XRD

Dual Compressor Hermetic Centrifugal Liquid Chiller



(Cooling Capacity - 8780 KW ~10548 KW)

- R-134a refrigerant
- Dual Compressor and dual refrigerant circuit - Inbuilt redundancy
- Best suited for large / District Cooling projects
- Significant operating cost savings at partloads due to cross flow configuration
- Low pressure losses in single pass heat exchangers saves pumping power by 45%
- Advance controls - Microprocessor controls with direct digital PIC, Chillervisor, CCN

30RWA

Scroll Chiller



(Cooling Capacity 19 KW ~ 291 KW)

- R-407c refrigerant
- Low noise multi Scroll Compressors
- Pro Dialog Micro processor control
- Integrated hydronic Module option for evaporator
- Space saving compact design, No plant room required
- Suitable to used with Carrier 09 series dry-cooler.
- Plug & Play Installation.
- Optional integrated fan control package to provide fan staging of remote mounted condenser

Model	Nominal Cooling Capacity *	Operating Weight	Dimensions (mm)
	Kw	Kg	L x W x H
30RWA020	19	325	1204 x 1750 x 695
30RWA025	24.4	339	1204 x 1750 x 695
30RWA030	28.2	339	1204 x 1750 x 695
30RWA040	37.8	361	1204 x 1750 x 695
30RWA045	43.5	375	1204 x 1750 x 695
30RWA060	54	627	2004 x 1750 x 895
30RWA070	67	648	2004 x 1750 x 895
30RWA080	76	682	2004 x 1750 x 895
30RWA090	87	703	2004 x 1750 x 895
30RWA110	102	777	2004 x 1750 x 895
30RWA120	117	840	2004 x 1750 x 895
30RWA135	134	849	2004 x 1750 x 895
30RWA150	143	859	2004 x 1750 x 895
30RWA160	148	953	2950 x 1993 x 922
30RWA185	170	1000	2950 x 1993 x 922
30RWA210	198	1318	2950 x 1993 x 922
30RWA245	226	1318	2950 x 1993 x 922
30RWA275	264	1361	2950 x 1993 x 922
30RWA300	291	1371	2950 x 1993 x 922

30HXA

Screw Chiller



(Cooling Capacity 264 KW ~931KW)

- R134a refrigerant
- Twin Rotor Screw Compressors in two independent refrigerant circuits
- Equipped with Pro Dialog Plus control to optimise the efficiency of the refrigerant circuit
- 980 mm wide for two compressor models, or 1015 mm for three or four compressor models.
- Mechanically cleanable evaporators

Model	Nominal Cooling Capacity *	Operating Weight	Dimensions (mm)
	Kw	Kg	L x W x H
30HXA 076	264	2140	3150X878X1657
30HXA 086	300	2152	3150X878X1657
30HXA 096	335	2194	3150X878X1657
30HXA106	370	2337	3150X878X1657
30HXA116	405	2342	3150X878X1657
30HXA126	440	2362	3150X878X1657
30HXA136	475	2408	3150X878X1657
30HXA146	510	2420	3150X878X1657
30HXA161	545	2610	3150X878X1758
30HXA171	580	2621	3150X878X1758
30HXA186	615	2698	3150X878X1758
30HXA206	743	3395	3150X878X1758
30HXA246	866	3457	3150X878X1758
30HXA261	896	3457	3150X878X1758
30HXA271	931	3457	3150X878X1758

16 DN

Double Effect - Direct Fired Absorption Chiller



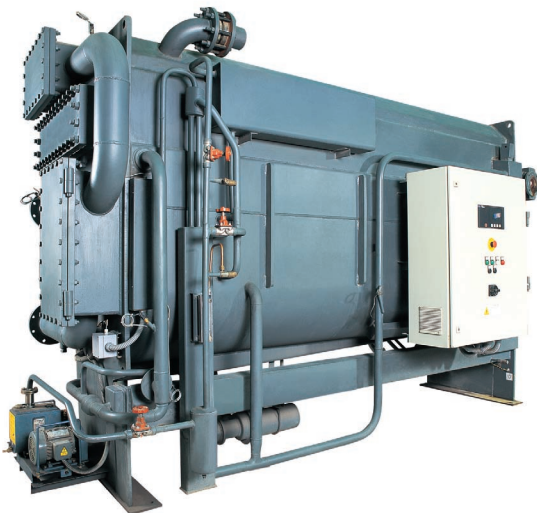
(Cooling Capacity 352 KW ~ 2321 KW)

- Double Effect - Direct Fired Chiller
- Enhanced Part Load design and energy efficient operation
- Automatic multiple protection from crystallization
- Operates as chiller or Heater
- Applicable to multiple kinds of fuels - Light Oil, heavy fuel Oil, Natural Gas

Model	Nominal Cooling Capacity *	Operating Weight	Dimensions (mm)
	Kw	Kg	L x W x H
16 DN 010	352	5350	2966 x 1797 x 2082
16 DN 012	422	5670	2966 x 1797 x 2082
16 DN 015	528	6700	3638 x 1830 x 2056
16 DN 018	633	7170	3638 x 1830 x 2056
16 DN 021	739	8243	3679 x 2034 x 2313
16 DN 024	844	8900	3679 x 2034 x 2313
16 DN 028	985	10930	4780 x 2072 x 2381
16 DN 033	1161	11620	4780 x 2072 x 2381
16 DN 036	1266	12090	4788 x 2299 x 2630
16 DN 040	1407	13210	4788 x 2299 x 2630
16 DN 045	1583	15120	4867 x 2493 x 2820
16 DN 050	1758	15860	4867 x 2493 x 2820
16 DN 060	2110	24470	5510 x 2906 x 3102
16 DN 066	2321	26400	6122 x 2906 x 3102

16 DE

Double Effect - Steam Fired Absorption Chiller



(Cooling Capacity 528 KW ~ 2321 KW)

- Double Effect - Steam Fired Chiller
- Automatic multiple protection from crystallization
- Carrier patented automatic injector purge system

Model	Nominal Cooling Capacity *	Operating Weight	Dimensions (mm)
	Kw	Kg	L x W x H
16 DE 015	528	6423	3631 x 1556 x 2056
16 DE 018	633	6728	3631 x 1556 x 2056
16 DE 021	739	8083	3668 x 1700 x 2309
16 DE 024	844	8537	3668 x 1700 x 2309
16 DE 028	985	10616	4774 x 1866 x 2381
16 DE 033	1161	11007	4774 x 1866 x 2381
16 DE 036	1266	12054	4800 x 1980 x 2630
16 DE 040	1407	13611	4800 x 1980 x 2630
16 DE 045	1583	14868	4867 x 2079 x 2820
16 DE 050	1758	15222	4867 x 2079 x 2820
16 DE 060	2110	23285	5510 x 2400 x 3102
16 DE 066	2321	25025	6122 x 2400 x 3102



(Cooling Capacity 527 KW ~ 2321 KW)

- Single Effect - Steam Fired Chiller/Hot water chiller
- Automatic multiple protection from crystallization
- Carrier patented automatic injector purge system.
- Leaf proof hermetic pumps. Few moving parts ensure quiet vibration free operation.

Model	Nominal Cooling Capacity *	Operating Weight	Dimensions (mm)
	Kw	Kg	L x W x H
16JL(R)011	527	5500	3672 x 1417 x 2300
16JL(R)013	633	6000	3672 x 1417 x 2300
16JL(R)015	738	8100	3724 x 1512 x 2573
16JL(R)018	844	8500	3724 x 1512 x 2573
16JL(R)021	984	10500	4777 x 1533 x 2639
16JL(R)024	1160	11000	4777 x 1533 x 2639
16JL(R)027	1266	12500	4854 x 1629 x 2904
16JL(R)030	1406	13500	4854 x 1629 x 2904
16JL(R)034	1582	14500	4875 x 1759 x 3106
16JL(R)038	1758	15000	4875 x 1759 x 3106
16JL(R)047	2110	21000	5640 x 2004 x 3464
16JL(R)052	2321	22000	6124 x 2004 x 3464



AIR TO WATER HEATPUMP CHILLERS

30RQ (NGA)

Air to Water Scroll Heat Pump



Model	Nominal Cooling Capacity *	Nominal Heating Capacity *	Operating Weight	Dimensions (mm)
	Kw	Kw	Kg	L x W x H
30RQ017	16.1	16.8	189	1136X 584X1578
30RQ021	20.4	21.4	208	1136X 584X1578
30RQ026	27	29.6	255	1002X 824 X 1790
30RQ033	33	33	280	1002X 824 X 1790

(Cooling Capacity 16.1 KW ~ 33 KW)

- R-410a refrigerant
- Pro Dialog Micro processor control
- Low noise new generation fans
- Vertical air heat exchanger coils
- With or without integrated hydronic module
- standard electrical disconnect switch.

30 RQS

Air to Water Scroll Heat Pump



Model	Nominal Cooling Capacity*	Nominal Heating Capacity*	Operating Weight	Dimensions (mm)
	Kw	Kw	Kg	L x W x H
30RQS039	38.4	41.6	535	2071 X 1081 X 1329
30RQS045	43.7	46.4	535	2071 X 1081 X 1329
30RQS050	49.9	53	543	2071 X 1081 X 1329
30RQS060	58.4	61	569	2071 X 1081 X 1329
30RQS070	63.9	69.1	582	2071 X 1081 X 1329
30RQS078	73.9	77	582	2071 X 1081 X 1329
30RQS080	77.7	79.2	590	2071 X 1081 X 1329
30RQS090	85.8	92.3	778	2071 X 1081 X 1329
30RQS100	96.2	100.3	927	2071 X 2278 X 1329
30RQS120	113.2	116.2	935	2071 X 2278 X 1329
30RQS140	131.6	136.9	995	2071 X 2278 X 1329
30RQS160	149.7	157	1099	2071 X 2278 X 1329

(Cooling Capacity 38 KW ~ 150 KW)

(Heating Capacity 41 KW ~ 157 KW)

- High Energy efficiency
- R-410 refrigerant
- Low noise multi Scroll Compressors
- Pro Dialog+ Micro processor control
- Low noise Two speed , new generation flying bird IV fans, made of composite material
- Optional hydronic module is available
- Six pumping options including single or dual pumps (duty standby) and variable speed pumps

(30RQS data is preliminary, Pl. consult your AHI Carrier representative for updated information)



AIR TO WATER HEATPUMP CHILLERS

30RYH

Ductable Air to Water Heat Pump



Model	Nominal Cooling Capacity *	Nominal Heating Capacity *	Operating Weight	Dimensions (mm)
	Kw	Kw	Kg	L x W x H
30RYH017	18	18.3	410	2058X962X1351
30RYH021	23	22.1	440	2058X962X1351
30RYH026	24	25.5	460	2058X962X1351
30RYH033	31	34.5	475	2058X962X1351
30RYH040	37	37.2	550	2097X1128X1351
30RYH050	44	48.2	612	2097X1128X1351
30RYH060	56	55	327	2097X1128X1351
30RYH070	65	62	388	2097X1128X1351
30RYH080	76	77	736	2097X1128X1351

(Cooling Capacity 18 KW ~ 76 KW)

- R-407c refrigerant
- Low noise multi Scroll Compressors
- Integrated hydronic module
- Pro Dialog Micro processor control
- Low noise new generation flying bird IV fans, made of composite material
- Optional Hydronic Module

30RQ

Air to Water Scroll Heat Pump



Model	Nominal Cooling Capacity *	Nominal Heating Capacity *	Operating Weight	Dimensions (mm)
	Kw	Kw	Kg	L x W x H
30RQ182	174	189	1902	2410 x 2253 x 2297
30RQ202	189	212	2002	2410 x 2253 x 2297
30RQ232	219	229	2012	2410 x 2253 x 2297
30RQ262	254	280	2180	2410 x 2253 x 2297
30RQ302	278	301	2760	3604 x 2253 x 2297
30RQ342	307	333	2956	3604 x 2253 x 2297
30RQ372	331	364	2984	3604 x 2253 x 2297
30RQ402	366	405	3110	3604 x 2253 x 2297
30RQ432	389	442	3632	4798 x 2253 x 2297
30RQ462	430	502	3772	4798 x 2253 x 2297
30RQ522	465	548	3930	4798 x 2253 x 2297

(Cooling Capacity 174 KW ~ 465 KW)

(Heating Capacity 189 KW ~ 548 KW)

- R-410a refrigerant
- Low Noise Multi Scroll Compressors
- Low noise 4th Generation Low noise Flying Bird fans
- Pro Dialog Micro processor control
- Hydronic module option - Single OR Dual pump upto 500 kW cooling capacity
- Option of High pressure or Low pressure pump

39HQ

Air Handling Unit with Eurovent Certification



- Air Volume: 550 to 36,000 LPS available in 122 different Std. Sizes
- Double Skin 60MM Thick Glass wool / Rockwool insulation panels
- Eurovent Certified Product
- Complies to European Norms (EN1886); Thermal Transmission - T2 / Thermal Bridging - TB2
- Configuration choices:
 - Forward / Backward / Airofoil / Plug fans including VFD's
 - Heat Recovery with Plate Heat Exchanger / Heat Wheel / Run Around Coil
 - Chilled water / DX Coil / Hot water coil / Steam Coil / Electric Heaters / Attenuators
 - Steam Humidifier / Evaporative Humidifier / Infrosonic Humidifier
 - Explosion proof motors & Spark proof fan
 - Stainless Steel (SS316) Casing
 - Base frame height - 62MM / 160MM / 200MM
- Key Applications - Airport, Oil & gas, Healthcare, Pharma, Semiconductor, Marine, Industrial, Customized high end applications



AIR HANDLING UNIT

39G / GK Units *Air Handling Unit with and without Non Thermal Bridging Profiles*



- Air Volume: 550 to 20,000 LPS (available in 22 different Std. Sizes)
- Double Skin 50MM Thick Poly Urethane Foam (PUF) Panels with Non Thermal Bridging (NTB) Profiles
- Complies to European Norms (EN1886); Thermal Transmission - T2 / Thermal Bridging - TB2
- Configuration choices:
 - Forward & Backward curved centrifugal fans
 - Chilled water coil in 4/5/6/7/8 Row deep arrangement
 - DX Coil / Hot water Coil / UV Lamps
- Base frame height - 100MM
- Key Applications - Office, Commercial Building, Hotel, Universities

39CBFI

Air Handling Unit



- Air Volume: 550 to 17,000 LPS (available in 19 different Std. Sizes)
- Double Skin 50MM Thick Poly Urethane Foam (PUF) panels
- Complies to EN1886 Thermal Transmission - T3 / Thermal Bridging - TB3
- Configuration choices:
 - Forward / Backward / Airofoil Centrifugal fans
 - Chilled water coil in 4/6/8 Row deep arrangement
 - Hot water / Steam Coils / Humidifiers / Attenuators
- Base frame height - 100MM
- Key Applications - Office, Commercial Building, Hotel, Universities

42N

Multi Position Fan Coil Unit



- Aesthetic design combined with versatility
- Multi position fan coil unit - Floor, Wall, Under-ceiling or furred in applications
- Ultra-quiet operation
- Fitted motorized valve & thermostat from factory
- Maximum height in horizontal position 220 mm
- 2 / 4 pipe OR Electric heat options

Model	Nominal Cooling Capacity	Air Flow	Net Weight	Dimensions (mm)
	Kw	L/S	Kg	W x D x H
Tangential Fan				
42N16	1.43	90	17	830 x 657 x 220
42N25	2.18	131	19	1030 x 657 x 220
42N33	3.14	158	19	1030 x 657 x 220
42N43	4.04	227	22	1230 x 657 x 220
42N50	4.42	242	22	1230 x 657 x 220
Centrifugal Fan				
42N16	1.44	92	17	830 x 657 x 220
42N25	2.43	167	19	1030 x 657 x 220
42N33	3.53	190	19	1030 x 657 x 220
42N43	4.17	238	22	1230 x 657 x 220
42N50	4.94	282	22	1230 x 657 x 220
42N60	5.87	339	35	1430 x 657 x 220
42N75	7.26	438	35	1430 x 657 x 220

ACCESSORIES/OPTIONS

Unit feet, Motorised valve packages, Fresh-air damper, Grouping kit, Discharge duct, Controls

42GW

Cassette Type Fan Coil Unit



- 298 mm height . Unit is light & easy to install
- Fresh air inlet provision
- High performance condensate drain pump with a special silencer
- Centrifugal fan with wing shaped blades ensures Low sound level
- 2 / 4 pipe OR Electric heat options
- Ease of maintenance - Major components accessible by opening grille

Model	Nominal Cooling Capacity	Air Flow	Net Weight (w/o panel)	Dimensions (mm)
	Kw	l/sec	Kg	W x D x H
42GWC004	2.4	184	21.5	575 x 575 x 300
42GWC008	4	194	22.5	575 x 575 x 300
42GWC010	4.7	236	22.5	575 x 575 x 300
42GWC012	5.9	306	46	825 x 825 x 300
42GWC016	8.3	361	48	825 x 825 x 300
42GWC020	11	486	51	825 x 825 x 300

ACCESSORIES/OPTIONS

Primary air Kit, Motorised valve packages, Photo-catalytic/ electrostatic filter, Grouping kit, Cassette Grille, Controls



CHILLED WATER FAN COIL UNIT

42DW

Horizontal Ducted Fan Coil Unit



- High-pressure centrifugal fans
- Minimized size with V-Shaped coil & reduced height of 285 mm
- 4 Speed motor
- 2 / 4 pipe OR Electric heat options
- Air return from the rear or below for increased installation flexibility
- Air outlet modularity (sleeve or spigots), outlets on the front or at the sides
- Quick installation with factory-installed options (controls, valves)

Model	Nominal Cooling Capacity	Air Flow	Net Weight	Dimensions (mm)
	Kw	L/S	Kg	W x D x H
42DWC07 (2 PIPE)	5.67	260	35	925 x 750 x 285
42DWC09 (2 PIPE)	7.69	349	37	925 x 750 x 285
42DWC12 (2 PIPE)	11.15	632	48	1325 x 750 x 285
42DWC16 (2 PIPE)	13.65	692	53	1325 x 750 x 285
42DWD09 (4 PIPE)	8.19	430	37	925 x 750 x 285
42DWD16 (4 PIPE)	12.64	805	53	1325 x 750 x 285

ACCESSORIES/OPTIONS

High-efficiency filter, Factory-installed two- or four-way valves, Grouping kit, Controls

42WH

High-Wall Fan Coil Unit



- Tangential fan for low sound level
- Ease of maintenance - Major components accessible by opening grille
- Tangential fan for low sound level
- Optional fully fetaured back panel - complete with 3 way & shut-off valves

Model	Nominal Cooling Capacity	Air Flow	Net Weight	Dimensions (mm)
	Kw	l/sec	Kg	W x D x H
42WHC016	1.43	69	20	800 x 145 x 290
42WHC020	1.65	86	20	800 x 145 x 290
42WHC028	2.1	131	21	800 x 170 x 337

ACCESSORIES/OPTIONS

Primary air Kit, Motorised valve packages, Photo-catalytic/ electrostatic filter, Grouping kit, Cassette Grille, Controls

42CE

Low Height Horizontal Concealed Fan Unit

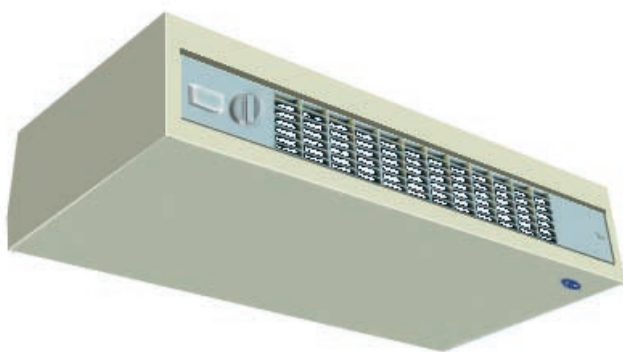


Model	Nominal Cooling Capacity	Air Flow	Net Weight	Dimensions (mm)
	Kw	L/S	Kg	W x D x H
42CE002	2.3	94	14	586 x 466 x 220
42CE003	3.2	141	15.6	666 x 466 x 220
42CE004	4.25	189	17.7	786 x 466 x 220
42CE005	4.72	236	19.1	866 x 466 x 220
42CE006	5.9	283	20.5	986 x 466 x 220
42CE008	8.15	378	28.3	1306 x 466 x 220
42CE010	9.46	472	31	1426 x 466 x 220
42CE012	11.6	566	35.3	1666 x 466 x 220
42CE014	13	661	41.5	1906 x 466 x 220

- Ultra thin with height 220 mm
- Three variants of drain pan available
- Ultra-Tranquil with noise of 25dB(A)
- Statically & Dynamically balanced fans
- Three variants - 2/3/4 Row coils
- Flexibility to change airflow direction
- 2 Pipe / 4 Pipe Units available

42C/V

Cabinet Type Unit



42 CL Horizontal

- Compact Design
- Low noise level with low speed motor and special acoustic materials
- Ease of Maintenance
- Aesthetic design combined with versatility



42 CV Vertical

Model	Nominal Cooling Capacity	Air Flow	Net Weight	Dimensions (mm)
	Kw	L/S	Kg	W x D x H
42CL/VL				
2	1.92	65	19	925 x 625 x 220
3	2.79	100	21	1045 x 625 x 220
4	3.84	130	24	1165 x 625 x 220
6	5.23	210	28	1400 x 625 x 220
8	7.68	260	38	1765 x 625 x 220
10	8.72	330	38	1765 x 625 x 220
12	10.47	420	40	2250 x 625 x 220

42DC/42DCD

High ΔT Horizontal Concealed Type Fan Coil Unit



- Furred-in Ceiling FCU with plenum
- Maximum height 483 mm
- Low noise level
- 4 row coil
- Specially designed High ΔT Units for District cooling application
- High efficiency heat transfer surface
- Cleanable or throwaway filters

42DC - Conventional application

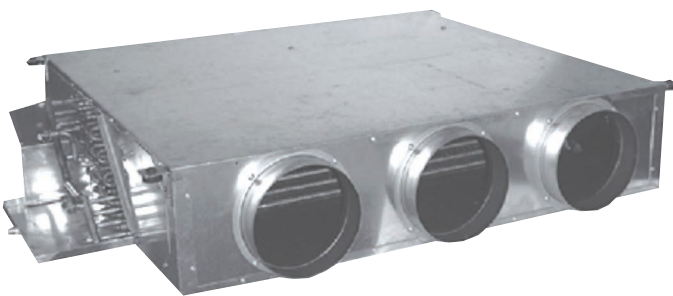
Model	Nominal Cooling Capacity	Air Flow	Net Weight	Dimensions (mm)
	Kw	L/S	Kg	W x D x H
42DC010	9.3	970	66	870 x 737 x 483
42DC012	12.3	613	76	997 x 737 x 483
42DC014	13.7	671	79	1124 x 737 x 483
42DC016	17.6	894	81	1251 x 737 x 483
42DC018	17.9	901	88	1378 x 737 x 483
42DC020	19.4	947	100	1479 x 737 x 483

42DC - High ΔT Units for District cooling application

Model	Nominal Cooling Capacity	Air Flow	Net Weight	Dimensions (mm)
	Kw	L/S	Kg	W x D x H
42DCD010	9.3	970	66	870 x 737 x 483
42DCD012	12.3	613	76	997 x 737 x 483
42DCD014	13.7	671	79	1124 x 737 x 483
42DCD016	17.6	894	81	1251 x 737 x 483
42DCD018	17.9	901	88	1378 x 737 x 483
42DCD020	19.4	947	100	1479 x 737 x 483

42 EM

Ducted Fan Coil Unit



- Eight Sizes with 2 Pipe, 4 Pipe, Plus Electrical Heater
- Low Height Compact ducted chilled water FCU's
- Air outlet Modularity with different spigots
- Extremely low sound level
- High efficiency EU3 filters
- Quick installation with factory installed options

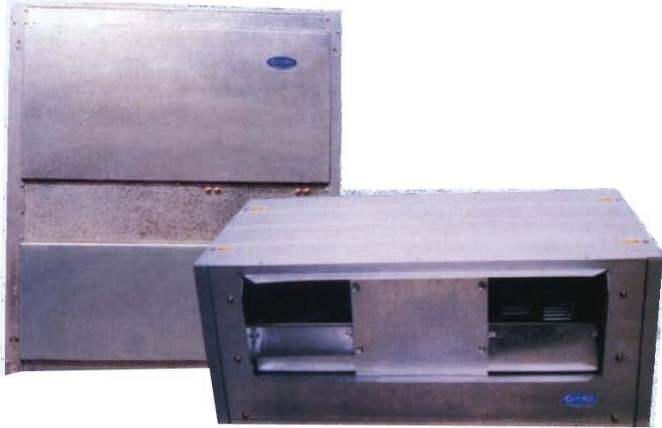
Model	Nominal Cooling Capacity	Air Flow	Net Weight	Dimensions (mm)
	Kw	L/S	Kg	W x D x H
42EM0.5	1.75	97	22	250 x 1015 x 700
42EM1.0	2.9	122	35	250 x 870 x 810
42EM2.1	3.63	143	53	250 x 1270 x 810
42EM2.2	4.47	183	53	250 x 1270 x 810
42EM2.3	5.87	256	53	250 x 1270 x 810
42EM3.1	4.34	143	69	250 x 1270 x 990
42EM3.2	5.38	183	69	250 x 1270 x 990
42EM3.3	7.15	256	69	250 x 1270 x 990



CHILLED WATER FAN COIL UNIT

40 LM

Plenum Fan Coil Unit

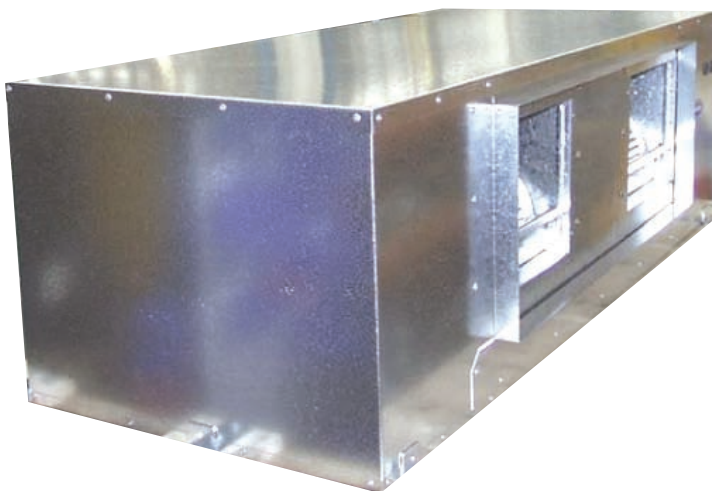


Model	Nominal Cooling Capacity	Air Flow	Net Weight	Dimensions (mm)
	Kw	L/S	Kg	W x D x H
40LM040	11.6	660	68	1000 x 680 x 480
40LM050	14.2	640	70	1000 x 680 x 480
40LM060	18.4	750	72	1000 x 680 x 480
40LM070	21.6	1050	95	1200 x 680 x 480
40LM090	29.1	1100	100	1200 x 680 x 480
40LM100	30.6	1500	118	1600 x 680 x 480

- Horizontal ducted High capacity Units
- Maximum height 483 mm
- Carrier Lanced Sine Wave fin pattern ensures energy efficient performance.
- High efficiency heat transfer surface
- Cleanable or throwaway filters

40 APB

High Static Chilled Water Fan Coil Unit



- High Static Fans
- Powder Coated Casing
- 4 Rows/ 6 Rows Cooling Coil
- Large easy access panels for maximum serviceability
- 25mm Foil Faced Insulation.
- Optional Fan Speed Controller
- Optional Hot Water Coil/ Electrical Heater
- Optional Powder Coated Cabinet
- Optional Drain Pan Stainless Steel



CHILLED WATER FAN COIL UNIT

40HW & 40RW

Chilled & Hot Water Single Skin Fan Coil Units



- Construction with Heavy gauge Galvabond with 25MM insulation
- Horizontal, Vertical, Front & rear fan configuration
- Chilled water coils, DX coils,
- Large easy access panels for maximum serviceability
- Frame Mounted Fans
- Belt Driven Fans
- Optional Hot Water Coil/ Electrical Heater
- Optional Powder Coated Cabinet
- Optional Drain Pan Stainless Steel

39TDH/V

High Static Chilled Water Fan Coil Unit



- Robust, Strong and light Construction
- Double skin PUF panels with colorbond outer skin
- Direct drive, 3-variable speed fans or Belt driven 3-Phase fan motor
- Large easy access panels for maximum serviceability
- Frame Mounted Fans
- Optional heating coils 1 Row/ 2 Rows and Electrical Heater
- 4 Rows, 6 Rows & 8 Rows cooling coil options
- Optional corrosion protection with Blue Fin or Epoxy coating
- Optional 50MM thick panel filters

TYPE A / B

Thermostats



- Two versions, A (2 Pipe) and B (2Pipe + Ele. Heater / 4 Pipes)
- Automatic or manual three-speed selection
- Automatic or manual change-over
- Electric heat control
- Comfort/economy/frost protection modes
- Air sensor Kit for remote sensing of return air
- Water sensor Kit for ‘Booster heating’ function
- Kit to install thermostat on 42NM/Z cabinet Units

TMS810

Thermostat



- LCD display with blue background
- Push buttons functionality
- Display of heating, cooling and ventilation by Icons
- Weekday and weekend Program
- Clock display

HDB

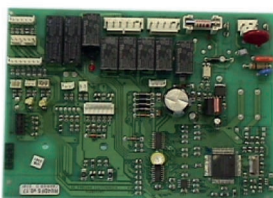
Controller



- Digital display or infra-red User Interface
- Unit grouping capability
- Adjustable settings and parameters
- Timer and daily scheduling
- External contact
- Scheduling
- Timer
- Window contact for frost protection

NTC

Communicating Controller



- Network communication
- Aquasmart Evolution system compatible
- IAQ and DCV management
- Motorised blinds and lighting control

Key benefits of the Aquasmart Evolution solution

- A solution that is quick and easy to install
- A solution that is easy to use
- A unique heating and cooling system
- A solution that protects the environment
- Only one supply source
- Programmed energy savings
- Individual zone control capabilities
- An extremely reliable system
- Easy to service and maintain

38AP S/D

Air-Cooled Scroll Condensing Unit



(Cooling Capacity 74 ~ 292 KW)

- R-410a Refrigerant,
- High Energy Efficiency - IPLV COP up to 4.75
- Multiple Scroll Compressors in Dual (38APD) / Single (38APS) refrigerant circuits
- Optional Digital Scroll compressor for unloading up to 5% in Dual Circuit units/10% in single circuit
- Operation up to -28.9DegC and +51.7DegC Ambient conditions
- Vertical refrigerant piping up to 20 Meters

Model	Nominal Cooling Capacity *	Operating Weight	Dimensions (mm)
	Kw		
Single Circuit			
38APS025	74	489	2242 x 1025 x 1549
38APS027	81	562	2242 x 1025 x 1857
38APS030	88	565	2242 x 1025 x 1857
38APS040	116	893	2242 x 2340 x 1854
38APS050	148	897	2242 x 2340 x 1854
Dual Circuits			
38APD025	74	497	2242 x 1025 x 1549
38APD027	81	571	2242 x 1025 x 1857
38APD030	88	573	2242 x 1025 x 1857
38APD040	116	950	2242 x 2340 x 1854
38APD050	148	961	2242 x 2340 x 1854
38APD060	174	1010	2242 x 2340 x 1854
38APD070	204	1184	2242 x 2816 x 1854
38APD080	236	1290	2242 x 3838 x 1854
38APD090	264	1456	2242 x 3838 x 1854
38APD100	292	1521	2242 x 3838 x 1854

For smaller capacities, please consult your AHI Carrier representative

38RA

Air-Cooled Scroll Condensing Unit



(Cooling Capacity 40 ~ 151 KW)

- Low noise Energy Efficient Scroll Compressors
- R-407c refrigerant
- Low noise two speed flying bird fans
- Integrated hydronic module with single or Dual pumps

Model	Nominal Cooling Capacity *	Operating Weight	Dimensions (mm)
	Kw		
38RA040	39.9	479	2071 x 1081 x 1329
38RA050	49.5	572	2071 x 1081 x 1329
38RA060	58	590	2071 x 1081 x 1329
38RA070	68	601	2071 x 1081 x 1329
38RA080	77	625	2071 x 1081 x 1329
38RA090	87	1100	2071 x 2278 x 1329
38RA100	95	1108	2071 x 2278 x 1329
38RA120	114	1136	2071 x 2278 x 1329
38RA140	133	1202	2071 x 2278 x 1329
38RA160	151	1250	2071 x 2278 x 1329



ROOFTOP PACKAGED UNIT

50TC

Air Cooled Scroll Rooftop Unit



Model	Nominal Cooling Capacity	Operating Weight	Dimensions (mm)
	Kw	Kg	L x W x H
50TC-A07	18.2	275	1888 X 1187 X 1051
50TC-D08	21.5	332	2238 X 1510 X 1048
50TC-D09	23.9	377	2238 X 1510 X 1253
50TC-D12	30	402	2238 X 1510 X 1253
50TC-D17	47.8	923	3249 X 2199 X 1253
50TC-D20	51.5	930	3249 X 2199 X 1253
50TC-D24	58.8	998	3595 X 2199 X 1253
50TC-D28	68.8	1057	3595 X 2199 X 1456

(50TC data is preliminary, Pl. consult your AHI Carrier representative for updated information)

(Cooling Capacity 18 KW ~ 69 KW)

- High Energy efficiency
- R-410 refrigerant
- Low noise multiple Scroll Compressors in 2 refrigerant circuits (except model 50TC-A07)
- Operation upto + 52 oC Ambient conditions



AHI Carrier

A Carrier Joint Venture Company

AHI Carrier (Australia) Pty Ltd

101 Silverwater Road
Silverwater NSW 2128 (Sydney)
Locked Bag 62, Silverwater NSW 1811
Tel: + 61 2 9202 4400
Fax: + 61 2 9202 4422

Unit 2, 89-91 Tennant Street
Fyshwick ACT 2609 (Canberra)
PO Box 173, Fyshwick ACT 2609
Tel : + 61 2 6280 6066
Fax: + 61 2 6280 4015

Unit 8, 140 Wecker Road
Mansfield QLD 4122 (Brisbane)
PO Box 2415, Mansfield QLD 4122
Tel: + 61 7 3006 1555
Fax: + 61 7 3006 1577

Tenancy 1, 41-43, Cawthorne Street
Thebarton SA 5031
Australia
Tel: +61 8 8114 1470
Fax: +61 8 8114 1471

Apac Way, (off Ivy St)
Redcliffe WA 6104 (Perth)
PO Box 385, Bassendean WA 6934
Tel: + 61 8 9366 3333
Fax: + 61 8 9366 3311

Level 1, 34-40 Garden Boulevard
Dingley VIC 3172 (Melbourne)
PO Box 355, Dingley VIC 3172
Tel: 13 COOL (13 2665)
Fax: + 61 3 8551 0380

Website : www.ahi-carrier.com.au

AHI Carrier (NZ) Pty Ltd

Level 4, 60 Stanley Street,
Parnell, Private Bag 92128
Auckland, NZ
Tel : + 64 9 355 6720, 0800 CARRIER
Fax : + 64 9 355 6735

Website : www.ahi-carrier.co.nz